

In Association With **CONCORD THEATRICALS** The Athens Theatre Presents

*White  
Christmas*

*Count Your  
Blessings  
Instead  
of Sheep*

*Sisters*

*Snow*

*Music & Lyrics by  
Irving Berlin*

*Book by  
David Ives &  
Paul Blake*

**WHITE  
CHRISTMAS**  
THE MUSICAL

© 2023 Mike Kitaif

**NOV 25 - DEC 17**



# ATHENS THEATRE 2023-2024 SEASON



I am thrilled to be at the helm of this fun, thought-provoking, thrilling, witty, and heartfelt season.

After leaving the sunny shores of *Margaritaville* and braving Stephen King's *Misery*, we now find ourselves tap dancing into the holiday season with Irving Berlin's *White Christmas*. Our holiday offering helps set the tone for our yearly festive décor, provided by our fantastic facility manager, Alan Ware, the Athens Staff, and a group of dedicated volunteers. It's a holiday tradition that no Volusia County resident should miss, and every tourist deserves to experience it.

Cascading into the New Year is *Frozen, Jr.*, a heartfelt story that will help us all understand that being different is not something to be feared but embraced as strength and love.

Love...now let's travel to ancient Rome for a hilarious farce infused with the music and lyrics of Stephen Sondheim, *A Funny Thing Happened On The Way To The Forum*. Slamming doors, love, and mistaken identity wrapped up in satire fuel this classic show that I know will keep you laughing in your seats.

And finally, we will take you on a trip to the East Village of NYC for a story about living as well as you can for as long as you can, *Carpe Diem*, seize the day. Everyone is afraid of losing the person they once were in order to be true to themselves. *RENT* will show us all that there's only us; there's only you—a true celebration to conclude our Season of Love.

I look forward to seeing and getting to know you at the theatre this season, and I hope you enjoy our season of love.



## GIVE THE GIFT OF THEATRE!



[www.AthensDeLand.com](http://www.AthensDeLand.com)

All events are sponsored in part by the State of Florida, Department of State, Division of Arts and Culture, the Florida Council on Arts and Culture, the Cultural Council of Volusia County, and Volusia County.





# WHITE CHRISTMAS

THE MUSICAL

Music & Lyrics by  
*Irving Berlin*

Based on the book by David Ives & Paul Blake

Based Upon the Paramount Pictures Film. Written For the Screen by  
Norman Krasna, Norman Panama and Melvin Frank.

Original Stage Production directed by Walter Bobbie;  
Orchestrations by Larry Blank; Vocal and Dance Arrangements by Bruce Pomahac.

Director/Choreographer  
*Mayme Paul*

Music Director  
*Chris Endsley*

Assistant Choreographer  
*Lauren Stromak*

Scenic Designer  
*Michael S Brewer*

Sound Designer  
*Lamar Hickley*

Lighting Designer  
*Nicholas Hogan*

Prop Designer/TD  
*Tori Oakes*

Costume Designer  
*Tamara Marke - Lars*

Assistant Stage Manager  
*Avery Tyler*

Scenic Charge Artist  
*Bonnie Sprung*

Production Supervisor  
*Diane McLean*

Costume Shop Manager  
*Amy Uppercue*

**November 25 - December 17, 2023 | The Athens Theatre**

*White Christmas* is presented by arrangement with Concord Theatricals

SUPPORT FROM





**PROUD ATHENS THEATRE SPONSOR**

C. A. PHILLIPS

2,351,834

PHOTOGRAPHY CAMERA

Filed May 2, 1940

3 Sheets-Sheet 1



# THE STUDIO

## CREATIVE GROUP

**EMMY AWARD WINNING  
FILM & PHOTOGRAPHY STUDIO**

(407) 900-9153

[WWW.THESTUDIOCREATIVEGROUP.COM](http://WWW.THESTUDIOCREATIVEGROUP.COM)



# Athens Theatre

## 2022-2023 Board of Directors

Joseph Maxwell, President  
Christopher Kemp, Vice President

Jay Keller, Secretary  
Michael Kelton, Treasurer

Jeffrey Bates  
Daniel Conard  
Joyce Darch  
Stephen Dornsife  
Donald Fields  
Tom Fleishel

Lyndsay Fuller  
Irwin Landau  
Robert Mann  
Pamela Rintz  
Judith Whitelock  
Michael Wingo



All events are sponsored in part by the State of Florida, Department of State, Division of Arts and Culture, the Florida Council on Arts and Culture, the Cultural Council of Volusia County, and Volusia County.



Florida  
ARTS & CULTURE

### Director's Notes...

Irving Berlin's *White Christmas* is a timeless tale of joy and goodwill. Berlin wrote over 800 songs, many of them classics, several of which you will hear tonight including "Blue Skies," "I Love a Piano," "Count Your Blessings," and the unforgettable title song, "White Christmas." It's rumored that on the day he wrote the song "White Christmas," he immediately ran to his assistant and said, "I've just finished the best song I've ever written."

The musical that bears this title was originally produced as a film in 1954 and presented onstage for the first time in 2000. It is about two song-and-dance men that team up in show business after World War II. Joining forces with a sister act, they trek to Vermont for a white Christmas. The real adventure starts when they discover that the inn is run by their old army general who's now in financial trouble.

Mayme is thrilled to have been at the helm of this uplifting, heart warming musical. Her most recent productions at the Athens include *The Hunchback of Notre Dame*, *Young Frankenstein*, *I Love You You're Perfect Now Change* and *Chicago*. She is also currently a Director with Virgin Voyages.

She would like to thank this stellar cast for bringing her such joy this holiday season and also her Mom, George, Kathi, B.J., Angie, and Steve for their unending support.

As we travel back in time to World War II, we hope you enjoy this classic Christmas story of love, loyalty, show business and snow!

*Mayme Paul*

White Christmas Director



**NOTE TO AUDIENCE:** - The videotaping or audio and/or visual recording of this production is a violation of United States Copyright Law and an actionable federal offense.



# THE CHRISTMAS MANSION

## Holiday Home Tour

*"Stunning. A perfect day for friends and families."*

~ C. Johnston

*"Ten Best Holiday Home Tours in America."*

~ USA Today



NOVEMBER 1 — JANUARY 20

JUST 3 TURNS OFF I-4 OR I-95

10:00, 11:30, 12:15,  
1:00, 1:30, 3:30,  
4:30, 5:30, 6:15

RESERVATIONS  
REQUIRED

FREE PARKING  
A \$28-\$38 +tax/fee  
Y \$15-\$25 +tax/fee

BOOK NOW AT:

[WWW.STETSONMANSION.COM](http://WWW.STETSONMANSION.COM)

*"The House That Hats Built"*

Florida's Most Historic Home | 1031 Camphor Lane, DeLand, FL 32720



## 10 New Lavish Room Displays

**STETSON MANSION**  
*"The House That Hats Built"*

**West  
Volusia**  
*Old Florida. New Vibe.*



# Meet The Cast



**Ryan Blagg** (Mike/Ensemble, u/s Phil Davis) is very excited to be returning to the Athens Theatre! Originally from Norman, Oklahoma, he is currently a performer at many of the world-renowned theme parks, including Walt Disney World, Universal Orlando Resort, SeaWorld Orlando, and Legoland Florida Resort. He is also a performer at a variety of dinner theaters in Orlando, including Pirate's Dinner Adventure. His previous theatrical credits include: Orlando Repertory Theatre: *Make Way For Duckling* (The Michaels); Athens Theatre: *Young Frankenstein* (Igor), *25th... Spelling Bee* (Leaf Coneybear); CFCArts: *Disney's Beauty and the Beast: In Concert* (Lefou); The Henegar Center: *Disney's The Little Mermaid* (Scuttle), *Joseph... Dreamcoat* (Zebulun); Theater West End: *9 to 5: The Musical* (Joe/Ensemble); Lyric Theatre of Oklahoma: *Assassins* (Giuseppe Zangara), *The Wizard of Oz* (Lollipop Guild/Ensemble); Reduxion Theatre: *Sweeney Todd* (Toby Ragg); Sooner Theatre: *Hello, Dolly* (Barnaby Tucker), *Disney's Beauty and the Beast* (Lefou). Website: [ryanpblagg.com](http://ryanpblagg.com)



**Alexa Boese** (Rhoda u/s Judy Haynes) is excited to be hitting the Athens Stage for the first time. She holds a BFA in Musical Theatre and a Dance Minor from The University of Central Florida. Recent Credits include *9 to 5* (Doralee Rhodes), *The Drowsy Chaperone* (Janet Van de Graaff), *A Chorus Line* (Tricia, US: Cassie, Shelia, Judy), *Once Upon A Mattress* (Lady Larkin), *Working* (Grace Clements), *Shrek* (Blind Mouse #1, Rat Tapper), *Bright Star* (Dance Captain, US Lucy), *Sister Act* (Sister Mary Celeste), *Mamma Mia* (Swing/Ensemble), *Rock of Ages* (Swing/Ensemble). Website: [www.alexaboese.com](http://www.alexaboese.com)

## Sign Up Now For Spring Enrollment 2024!

**ATHENS THEATRE** ★ ★ ★  
**YOUTH ACADEMY**

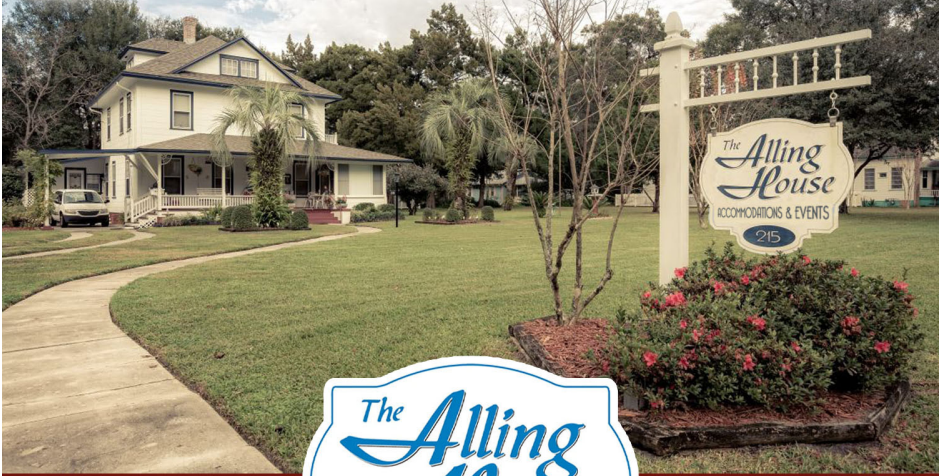
**after school classes**

KIDS MUSIC TIME • ACTING & PUBLIC SPEAKING • CREATIVE DRAMA  
IMPROV • MUSIC THEATRE • KIDS DANCE

Glasses Available From Grades K-12 • End of Semester Showcase Included

For more information or to sign up, go to [athensdeland.com/classes](http://athensdeland.com/classes)  
or email [Education@AthensDeland.com](mailto:Education@AthensDeland.com)

*Experience Old Florida At Its Finest!*



- Historic Building Built in 1908

- 5 Minutes from the world-famous Blue Spring Park known for its beautiful manatees.



- Featuring 3 beautifully appointed rooms, and the property boasts 5 furnished, fully equipped cabins.



- Discount offered for residents of John Knox Village

- A truly charming and unique property which is perfect for photo shoots, weddings, and celebrations of all kinds!



**215 East French Avenue • Orange City, FL 32763**  
**386-775-7648 • [allinghousebb.com](http://allinghousebb.com)**





# Meet The Cast



**Kate Budzinski** (Susan Waverly) is very excited to be returning to the Athens stage. You may have seen her most recently as Lavender in *Matilda, Jr.* and Jenny/Ensemble in *Scrooge*. She is actively involved in choir and the theatre program at DeLand High School and enjoys crocheting in her free time. She is grateful to her parents and friends for always supporting her.



**Noah Clark** (Mr. Snoring Man/Ed Sullivan Announcer u/s General Henry Waverly) is very excited for his third show with the Athens Theatre. Noah has been seen most recently as Shrek in *Shrek (TYA)*, Gomez in *The Addams Family*, Frederic/US Frolo in *The Hunchback of Notre Dame*, and Dick/Tinsworthy/US Hart in *9 to 5*. Other roles include Pippin in *Pippin*, Chad in *All Shook Up*, Kenickie in *Grease*, Harry Bright in *Mamma Mia*, and Gaston in *Beauty and the Beast*.

When not doing musicals, Noah runs the audio company HCM Productions where he produces music for numerous theatrical productions as well as recording vocals. He would like to thank the Athens Theatre for this opportunity and is very excited to bring this classic and fun musical to life with such an amazing cast!



**Skylar Dowman** (Cigarette Girl/Ensemble) recently moved home to Florida after graduating from Reinhardt University with a Bachelor of Fine Arts in Musical Theatre and a minor in Dance. Skylar's recent theatre credits include Signer/Dancer in *I HRT Broadway* (Halifax Repertory Theatre), Ensemble/Dance Captain in *Escape to Margaritaville* (Athens Theatre), Shellhammer in *Miracle on 34th Street* (Beach Street Rep), April in *Company* (Reinhardt University), and Hope Harcourt in *Anything Goes* (Reinhardt University). She is thrilled to be spending her holidays performing in White Christmas at the Athens this year!



**Allyson Elliott** (Ensemble) Allyson is thrilled to be returning to the Athens Theatre! For 13 years, she has been blessed to perform and instruct around Central Florida, in both professional theaters and theme parks. Some recent credits include Margaret in *9 to 5* (Theater West End). You can also catch her as a certain Who or two in Grinchmas at Universal Studios, and next up, she will be playing Eva in *Allie Kazan and The Magic Mansion* (Orlando Family Stage)! She would like to

express her gratitude to Jesus for being her rock, as well as to her SuperMom, everyone who came to see the show, and the spectacular cast and crew. A special shout-out goes to her brother, Nate, and her boyfriend, Chase. She's incredibly excited to share the stage with both of them in this production. (Mark 12:30-31)



WWW.JOEHEARNEVENTS.COM

-AWARD WINNING PLANNERS-

BEST EVENT PLANNERS- NEWS JOURNAL

BRIDES CHOICE AWARD -WEDDING WIRE



“YOU ONLY HAVE ONE CHANCE  
TO MAKE THE DAY PERFECT.”



A PROUD SPONSOR OF THE ATHENS THEATRE

-JOE HEARN





# Meet The Cast



**Nate Elliott** (Phil Davis) is absolutely thrilled to be back on this beautiful stage and celebrating the season with his Athens family again! Some favorite past roles include Eugene in *Brighton Beach Memoirs*, Don Lockwood in *Singin' in the Rain*, Ted Hanover in *Holiday Inn*, Fred Casely in *Chicago*, and Emcee in *Cabaret*. When he's not onstage, he can be found

entertaining over at Walt Disney World and Universal Orlando Resort. He would like to thank the creative team for trusting him with the massive honor of getting to play this dream role. Most of all, he would like to thank his family and friends for their continuous love and support! And most of all, he'd like to thank God for His never-ending blessings in his life. Finally, stay safe, God bless, may the Force be with you, enjoy the show, and have a magical day!



**Erin Fallis** (Rita) is over the moon to be making her Athens Theatre debut with this timeless show! Recent theatrical credits include: Ensemble in *Fiddler on the Roof* (City Springs Theatre Company), Vicki/Judy understudy in *A Chorus Line* (Dr. Phillips Center for the Performing Arts), Mimi/Dance Captain in *Guys & Dolls* (Pagosa Springs Center for the Arts), Featured Dancer in *TEXAS! Outdoor Musical* (Texas Panhandle Heritage Foundation). She is a BFA Graduate of

Northwestern State University of Louisiana. Endless gratitude to my family for their endless love and support! IG @erinfallis and www.erinfallis.com



**Chandler Talkington Fletcher** (Ralph Shel Drake u/s Bob Wallace) is delighted to make his Athens debut in *White Christmas*. A recent graduate from Florida Southern College with a Bachelor of Fine Arts in Performance, Chandler, has worked in theatre for over 12 years. He was previously seen as Shylock in *O'Farrell & Kirkpatrick's Something Rotten*, Dorante in David Ives' *The Liar*, and Mr. Kraler in Goodrich & Hackett's *The Diary of Anne Frank*.

Pat and Toni's  
**Sweet Things**

once again brings you...

**GOLDEN TICKET**

**ATHENS BAR**  
www.athensbar.com

2 out of every 100 bars will feature a  
**GOLDEN TICKET VALID FOR TWO FREE TICKETS**

(subject to availability) to any show!  
These yummy confections will be available at our concessions stand and at Pat & Toni's (located on the corner of Indiana and Woodland).

# Happy Holidays



DELAND & GREATER  
**WEST VOLUSIA**  
CHAMBER OF COMMERCE  
EST. 1890

FROM YOUR  
CHAMBER TEAM,

*Janet, Kelly, Terri,  
Kaitlin, & Thomas*

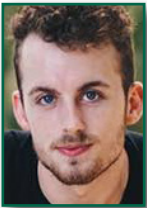




# Meet The Cast



**Ellis Hall** (Jimmy) is a student at the University of Central Florida where he is studying theatre and music composition. He is very excited to return to the Athens Theatre. His other credits include *The Hunchback of Notre Dame* at the Athens Theatre, *A Chorus Line* at the Dr. Phillips Center, and *Mamma Mia!* at Magic Curtain Productions. Ellis is very excited to join the Athens team once again and thanks his family and teachers for their constant support and direction.



**Tyler Ham** (Dance Captain) is delighted to be making his debut with the Athens Theatre. Tyler studied Entertainment Management and minored in Dance at the University of Central Florida (c/o 2019) and has taken on roles such as Dancer, Choreographer, Teacher, and even Dance Photographer ([www.mthamphotography.com](http://www.mthamphotography.com) or @mthpstudio). He has trained regularly at various studios around Orlando, but most notably with Underground Movement where he focuses on Contemporary and Jazz. Tyler wants to give a huge ‘THANK YOU’ to his friends and family for being so supportive.

**AthensDeLand.com** **November 29th**

## Special Thanks

**MIKE KITAIF**  
Publicity & Production Photos

**EAST COAST THEATRICALS**  
Select Costume Pieces

**STUDIO CREATIVE GROUP**  
Video Promo

**ALLING HOUSE**  
Publicity Photo Shoot Location

WE ALSO THANK THE ATHENS THEATRE YOUTH ACADEMY AND NUMEROUS OTHER PERFORMANCE GROUPS AND PERFORMERS FOR CAROLING TO OUR AUDIENCES PRIOR TO PERFORMANCES AND CREATING THE PERFECT HOLIDAY ATMOSPHERE.



*From all the places I have lived,  
I call Alliance Community my home.*

*-Ms. Jane West, Alliance Community Resident*

# Be Part of *Our History*

• MOVE-IN SPECIALS •

**DOWNTOWN DELAND IS AN AWARD-WINNING  
FLORIDA MAIN STREET COMMUNITY.**

**Alliance Community** is located in the heart of DeLand, Florida, since 1954. Our life plan community provides the quality, affordability, and health care you need, plus the recreational activities you desire!

- Single family homes, villas and limited specially priced apartments are available
- Assisted living and Skilled Nursing Care with Life Plan program is guaranteed
- Activities designed to help improve memory and overall fitness

*Scan the QR code or call to schedule a personal tour and stay for lunch on us.*



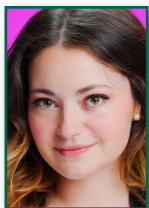
644 S. Woodland Blvd., DeLand, FL 32720 | AllianceCommunity.org  
1-800-334-4133 Sales & Marketing Direct Line: 1-386-736-1814



# Meet The Cast



**Jandrea Novak** (Betty Haynes) has been dreaming her entire life of spending Christmas at Columbia Inn! This show marks her Athens Theatre debut, and she's over the moon to help bring this heartwarming story to the stage. Jandrea has performed throughout Orlando in the theme parks and various dinner shows. Her favorite credits include *West Side Story* (Clarice), *Mary Poppins* (Chimney Sweep), and *Kiss Me, Kate* (Dance Captain). She dedicates this performance to her parents, who introduced her to the Haynes sisters and Wallace & Davis on her very first Christmas.



**Samantha O'Donnell** (Judy Haynes) is so excited to be returning to the Athens! She was last seen on this beautiful stage as Inga in *Young Frankenstein*. Her other credits include Val in *A Chorus Line* (Theater West End), Lagoon Blue/Female Swing/Dance Captain in *Monster High Live!* (Full Stop Productions), and Janet Van de Graaf/Choreographer in *The Drowsy Chaperone* (FTC at the University of Central Florida). A huge thank you to Mayme, Chris, Lauren, the amazing production team, and the wonderful cast and crew!



**Tonya Oslack** (Ensemble) is new to the area, and she is thrilled to be performing at the Athens Theatre! She has made two major cross-country moves over the past three years, which has made pursuing her love for theater challenging (from Ohio to Texas to Florida). Prior to moving to Florida, she was a regular performer at the LaComedia Dinner Theater in Ohio. Tonya was last seen there in a comedic role as Shirley in the hysterical musical *Disaster*. When not on stage, she works as a travel agent ([toslack.dreamvacations.com](http://toslack.dreamvacations.com)), and she is also a wife, a mother of three, and most recently, a grandmother ("Glam-ma").



- Improve Power Range
- Performance
- Tone Quality
- Personal Style
- Breath Control



For more information or to sign up, go to [athensdeland.com/lessons](http://athensdeland.com/lessons) or email [Education@AthensDeland.com](mailto:Education@AthensDeland.com)

INTEGRITY



AMPLIFIED



**SYSTEM INTEGRATION  
& INSTALLATION**

Design Services • Acoustic Treatment • AVL Installation  
Product Training/Support • Streaming Services



**RENTAL & EVENT  
PRODUCTION**

Audio • Lighting • Video

3905 Center Loop • Suite 300 • Orlando, FL 32808  
407-299-9678



# Meet The Cast



**Eric Raterman** (Ezekiel Foster/Conductor) is excited to be spending another holiday at the Athens Theatre after appearing last year in *Scrooge*. On this historic stage he has also been featured as an immigrant ensemble member in *Ragtime* and the bumbling laborer (Eddie) in *Mamma Mia*. Since moving to Orlando, other various roles include *Mamma Mia* (Sky), *Sideshow* (Houdini and Browning), *The Rocky Horror Show* (Brad), and *Legally Blonde* (Kyle). Eric would like to thank the Athens' staff and cast for welcoming another holiday and New Year with this show--and the audience for supporting the arts.



**Gabriella Smith** (Seamstress/Ensemble) is excited to return to the Athens Theatre; she was previously seen in *The Hunchback of Notre Dame*. She is studying theater at the University of Central Florida. Previous credits include *As You Like It* (musician, Phoebe U/S, Denis U/S), *Mary Poppins* (Dance Captain/Ensemble), *Romeo and Juliet* (Lord Capulet), and *Beauty and the Beast* (Mrs. Potts). She has also worked as a Stage Manager at the Maltz Jupiter Theatre's Goldner Conservatory. She would like to thank the entire creative team for this fabulous opportunity!

Coming to the Athens Theatre  
**TUESDAY, DECEMBER 19TH**

The OBBS  
Holiday Concert

© 2022 Mike Kitaf

The promotional image features a stage performance. On the left, a man in a red sequined tuxedo jacket and black bowtie sings into a microphone. Behind him, a band of musicians in dark suits plays brass instruments. On the right, three women in elegant, light-colored, sequined dresses stand together. In the foreground, a large white logo for 'The OBBS' is superimposed, featuring a circular emblem with musical instruments and the letters 'OBBS'. Below the logo, the words 'Holiday Concert' are written in a large, white, cursive font. The background is a dark stage with blue lighting and a large, faint circular logo on the wall.

**Your One-Stop Shop For All Your Holiday Shopping!**



**PRETTY**  
**LITTLE THINGS**  
Vintage \* Home \* Fashion



113 N. Woodland Blvd · Downtown DeLand · 386.736.0005  
prettylittlethingsofdeland.com · Ig: @prettylittlethingsofdeland

*Compassionately Providing Healthcare to Those in Need*



## Good Samaritan Clinic

The Good Samaritan Clinic is a faith based, volunteer driven, non-profit organization that provides quality, non-emergency medical and dental services-free-of-charge to eligible residents of West Volusia County. These residents are between the ages of 18-64 years old that have no insurance and are 200% below the federal poverty level.

If you have the desire to serve, please call us 386-738-6990

To make a financial contribution,  
please visit our website at [www.gsdl.org](http://www.gsdl.org)  
136 East Plymouth Avenue, Deland, FL 32724



**THE FLAGLER**  
**PLAYHOUSE**  
**FUNDRAISER**  
**DECEMBER 6TH • 7:30PM**  
**ATHENSDELAND.COM**

© FlaglerLive.com



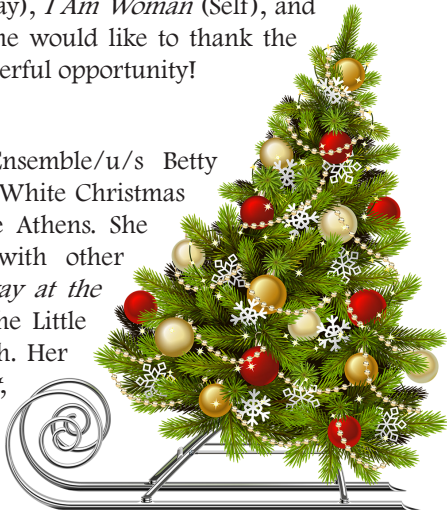
# Meet The Cast



**Tiannas Stevens** (Martha) is excited to join the *White Christmas* cast. She was last seen as Roz in *9 to 5*. Her other credits include *Snow White* (Magic Mirror/Dwarf Mack), *Best of Broadway* (Self), Junie B. Jones: *Jingle Bells Batman Smells* (May), *I Am Woman* (Self), and *Into the Woods* (Narrator). She would like to thank the production team for this wonderful opportunity!



**Emilyann Tobias** (Tessie/Ensemble/u/s Betty Haynes) is excited to join the *White Christmas* cast in her debut role at the Athens. She most recently collaborated with other performing artists in *Broadway at the Beach: A Musical Revue* at The Little Theatre in New Smyrna Beach. Her other roles include Aggie in *The Game's Afoot*, Philia in *A Funny Thing Happened on the Way to the Forum*, and Cindy Lou in *The Marvelous Wonderettes* at The Little Theatre.









# Meet The Cast



**Chase Williams** (Bob Wallace) is excited to be making his Athens Theatre debut! Chase is a professional actor, singer, and writer based in Orlando, FL. His recent credits include Dr. Jack Seward in *Dracula* (Opera Del Sol), Beast in *Beauty and the Beast* (CFCArts), King Arthur in *Spamalot* (Encore), Gargoyle/Ensemble in *Hunchback in Concert* (William Daniel Mills Theatre Company), Mr. Mallard in *Make Way for Ducklings* (Orlando Repertory Theatre), Wally Patton in *Shboom! Life Could be a Dream* (Winter Park Playhouse), Huey Calhoun in *Memphis* (Theatre West End), Josh Baskin in *Big* (Garden Theatre), Monty Navarro in *Gentlemen's Guide* (Osceola Arts). You can also catch him this holiday season in *Grinchmas: A Who-liday Spectacular* or in *Entertainment* at Universal Studios. Much love to his family, girlfriend Allyson, and friends for their constant support. He dedicates his performance to his grandparents Bob and Betty! Enjoy the show! Soli Deo Gloria! IG: [\\_chase\\_n\\_dreams](#)



**Gregory Williams** (General Henry Waverly) *White Christmas* is Greg's third show at The Athens. He has worked on several stages in Orlando, Chicago, and New York State. His entertainment career has spanned many mediums, including musical theater, radio, television, and modeling. Some of his favorite roles include Sam (Ritz Theater Award Winner) in *Mamma Mia*, Joe (Perot Award Winner) in *Damn Yankees*, Applegate in *Damn Yankees*, Judas in *Jesus Christ Superstar*, Bobby in *Company*, Bob Wallace in *White Christmas*, and Roger Debris in *The Producers*. Greg is especially thrilled to have originated the role of Quintus Arrius in the World Premiere of *Ben-Hur - THE MUSICAL*, a multi-million dollar pre-Broadway production that was originally staged in Orlando at the Orange County Convention Center. Thank you, Lord, for all your multiple blessings.



- 3 Story Vintage Mall
- Over 42 Dealers
- Everything from Furniture to Collectibles
- Mary Ellen Walker, Owner



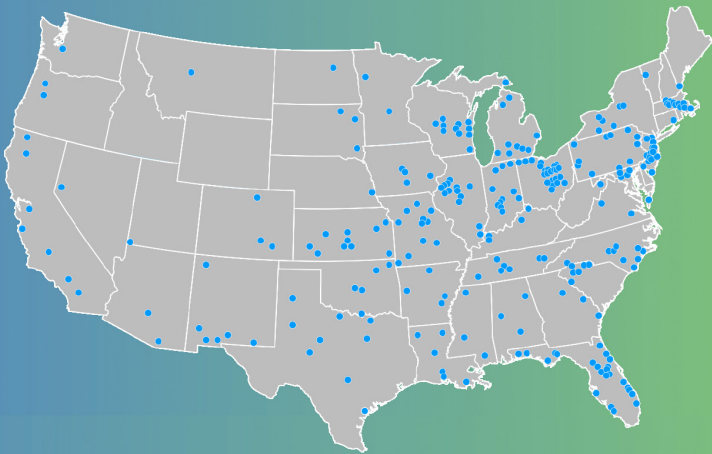
114 S. Woodland Blvd.  
DeLand, FL 32720  
386-747-4061  
Hours Open:  
Sunday-Monday 12-4  
Tuesday-Friday 11-5  
Saturday 10-6

Grandma had it, Mom got rid of it, You want it back.  
Come see if we've got it.

# Connect

**We make connections  
across our community.**

We connect the community to local news and information. We also connect your business to more customers. And we can connect your brand story to a premium, engaged audience like no one else.



**LOCALiQ | Daytona Beach**





**ARTISAN**  
DOWNTOWN HOTEL  
UPSCALE MODERN BOUTIQUE

215 S Woodland Blvd. DeLand, FL 32720



# Thank You To Our New Patron Sponsors!

\$15,000 - \$25,000 Star Performer Sponsors:  
**Jay & Karen Keller**

\$10,000 - \$14,999 Leading Actor Sponsors:  
**Dr. Bruce & Carolyn Bigman**

\$5,000 - \$9,999 Supporting Actor Sponsors:  
**Kristin Bright**  
**Clifford & Lavonne Strachman**

\$2,000-\$4,999 Ensemble Performer Sponsors:  
**Bill & Pam Brown**  
**Pamela & Rick Rintz**  
**Burt & Arleen Rosenberg**  
**Steven Smith**

# GET A STAGE WORTHY SMILE!



**ANTHONY J. VISCONTI, III, DMD**  
FAMILY & IMPLANT DENTAL CARE

333 East New York Avenue, Suite B  
DeLand, FL 32724

Tel 386.734.7330 • Fx 386.734.0329  
viscontidental.com

# Irving Berlin's



# WHITE CHRISTMAS

THE MUSICAL

## ~ Cast ~

Chase Williams.....	Bob Wallace
Nate Elliot .....	Phil Davis
Jandrea Novak.....	Betty Haynes
Samantha O'Donnell .....	Judy Haynes
Tianna Stevens.....	Martha Watson
Gregory Williams .....	General Henry Waverly
Kate Budzinski .....	Susan Waverly
Eric Raterman .....	Ezekiel Foster/Conductor
Chandler Talkington Fletcher .....	Ralph Sheldrake (Bob Understudy)
Ryan Blagg .....	Mike (Phil Understudy)
Noah Clark.....	Snoring Man/Scooter/Ed Sullivan Announcer (General Understudy)
Michael Tyler Ham .....	Dance Captain
Ellis Hall .....	Jimmy
Erin Fallis.....	Rita/Show Dance Captain
Alexa Boese .....	Rhoda (Judy Understudy)
Emilyann Tobias.....	Tessie (Betty Understudy)
Gabriella Smith.....	Seamstress
Allyson Elliot.....	Asst. Seamstress
Skylar Dowman.....	Cigarette Girl
Tony Oslack.....	Secretary /Ensemble

## ~ Production Team &

Director and Choreographer .....	Mayme Paul
Music Director .....	Chris Endsley
Producing Artistic Director .....	Frank Ramirez
Scenic Designer .....	Michael Brewer
Prop Designer/Scenic Builder/TD .....	Tori Oakes
Costume Designer .....	Tamara Marke-Lares
Lighting Designer/ATD .....	Nicholas Hogan
Sound Designer.....	Lamar Hickley





## ~ Act 1 ~

### HAPPY HOLIDAY

Bob, Phil & Sheldrake

### WHITE CHRISTMAS

Bob, Phil, Sheldrake & GIs

### HAPPY HOLIDAY/LET YOURSELF GO

Bob, Phil & the Chorus

### LOVE AND THE WEATHER

Bob & Betty

### SISTERS

Betty & Judy

### THE BEST THINGS HAPPEN WHILE YOU'RE DANCING

Phil, Judy & Quintet

### SNOW

Phil, Judy, Bob, Betty, Snoring Man, Mrs. Snoring Man, Passengers

### WHAT CAN YOU DO WITH A GENERAL?

Martha, Bob & Phil

### LET ME SING AND I'M HAPPY

Martha

### COUNT YOUR BLESSINGS INSTEAD OF SHEEP

Bob & Betty

### BLUE SKIES

Bob and the Chorus

## ~ Act 2 ~

### I LOVE A PIANO

Phil, Judy & the Chorus

### FALLING OUT OF LOVE CAN BE FUN

Martha, Betty & Judy

### SISTERS (REPRISE)

Bob & Phil

### LOVE, YOU DIDN'T DO RIGHT BY ME/ HOW DEEP IS THE OCEAN

Betty, Bob

### THE OLD MAN

Bob, Men

### LET ME SING AND I'M HAPPY (REPRISE)

Susan

### HOW DEEP IS THE OCEAN (REPRISE)

Betty & Bob

### THE OLD MAN (REPRISE)

Bob, Phil, Sheldrake, Men

### WHITE CHRISTMAS

Company



## Technical Crew ~

Scenic Charge Artist.....	Bonnie Sprung
Scenic Build Crew .....	Jonathan Jackson, Ethan Roth, Henry Roth, Diego Caso
Production Supervisor/PSM.....	Diane McLean
Assistant Stage Manager/Deck Chief .....	Avery Tyler
Fly Operator/ASM.....	Trinity Baker
Costume & Prop Shop Manager .....	Amy Uppercue
Run Crew .....	Cadence Mims
Lightboard Operator.....	Madison Thompson
Spotlight Operators .....	Braden Hunt, Ollie Baith



# Sanz & Sanz

PSYCHOLOGICAL ASSOCIATES, LLC

DRS. DON AND ANITA SANZ

Licensed Psychologists serving individuals and couples

(386) 943-9040



**Coming to the Athens Theatre**



**The January 5-6  
Rocket Man  
Starring Rus Anderson Show**



**ADVANCED UROLOGY  
INSTITUTE**

LOOKING AT HEALTHCARE  
FROM A DIFFERENT PERSPECTIVE.

[www.AdvancedUrologyInstitute.com](http://www.AdvancedUrologyInstitute.com)  
685 Peachwood Dr • DeLand • FL 32720 Phone: 386•736•3463





# Meet The Production Team



**Mayme Paul** (Director/Choreographer) is thrilled to be back with the Athens family. Previous shows here include *The Hunchback of Notre Dame*, *Young Frankenstein*, *I Love You*, *You're Perfect*, *Now Change*, *Chicago*, *Singin' in the Rain*, *Into the Woods*, *The Fantasticks*, and *Gypsy*. Other recent shows include *9 to 5*, *A Chorus Line*, and *Cabaret* at Theatre West End, and *Shrek* at Dr. Phillips. As an actor, Mayme performed on Broadway in *A Chorus Line*, *Little Johnny Jones*, *The Tap Dance Kid*, and the TONY Awards. Recently, she has taken a new position as Director for Virgin Voyages cruise lines. She would like to thank her husband for his constant support and encouragement. Merry Christmas, everyone. She hopes you enjoy this holiday classic!



**Chris Endsley** (Music Director): Chris is a 30+-year professional Music Director, currently serving as Vocal Director for Virgin Voyages cruise line. He has been a Music Director/Accompanist for Garden Theatre, UCF Conservatory Theatre, Rollins College, Athens Theatre, Orlando Repertory Theatre, Daytona State College, Theatre Winter Haven, Granbury Opera House (Texas), and Seaside Music Theatre. Chris has music directed some of The Athens' biggest musicals, including *Hairspray*, *Spamalot*, *Cabaret*, *Legally Blonde*, and *Sister Act*. Chris was on the faculty for seventeen years at Seabreeze High School, Daytona Beach, where he served as Chair of the Fine Arts Department, Choral Director, and coordinator of the prestigious American Musical Theatre program. In 2004, he was awarded the school's coveted Teacher of the Year. In 2022, Chris retired from University High School, Orange City, ending a twenty-five-year career as a music educator with Volusia County Schools. Chris toured the country as a concert organist, conducted workshops in church music development, and has over 40 years of experience in church music. He is currently Organist/Director of Traditional worship at North Lake Presbyterian Church, Lady Lake. Chris holds a Bachelor of Music in Church Music/Organ from Baylor University, a Master of Music in Organ Performance from Florida State University, and two additional years of graduate study in performance from Texas Christian University. Chris is a proud member of AFM Local 389. Much love to A.M.E.N.





# Boulevard Tire Center

*Focused on Tomorrows Solutions Today*



**GET  
TIRE PRICES**



**SHOP FOR  
AUTO REPAIRS**



**SCHEDULE  
AN APPOINTMENT**



**TRY ON SOME  
WHEELS**



Axle, CV Joint & Driveshaft Repair



Belts & Hoses



Brake Repair



Climate Control Systems



Cooling System Repair



Differential Repair



Electrical and Electronic Systems



Engine Diagnostics and Performance



Four Wheel Drive Systems

**Car Care You Expect... Customer Service You Deserve.**

386•734•6447  BoulevardTire.com



**BELLEVIEW • BUNNELL • DELAND • EDGEWATER • LADY LAKE  
MOUNT DORA • ORANGE CITY • ORMOND BEACH • PORT ORANGE**





# Meet The Production Team



**Lauren Stromak** (Assistant Choreographer) is a performer, choreographer, and educator originally from South Florida with a degree in Musical Theatre from the University of Central Florida. Her artistic journey has taken her to various stages in Florida, from Stuart to Tampa and throughout Central Florida. Lauren is thrilled to serve as Assistant Choreographer for Mayme Paul in this production. Her association with the Athens Theatre began in 2021 when she joined the cast of *ELF*.

Since the fall of 2021, she has been a teaching artist of the Youth Academy, and her most recent project involved choreographing *Footloose: Youth Edition* on the Athens stage this past summer. She's sending warm wishes that *White Christmas* will bring you Happy Holidays!



**Michael S. Brewer** (Scenic Designer) Michael is a 1987 graduate of Wright State University. He started working in regional theaters and summer stock across the country. He has enjoyed working at The Cincinnati Playhouse, CCM, Cleveland Playhouse, The Alliance Theatre, and The La Jolla Playhouse. In Ohio, his home, he has worked at The Short North Stage, CATCO, The Columbus Children's Theatre, and several other small events. He is very excited to return to The Athens where he has designed many shows, including *Hunchback* and *Margaritaville*. He wants to dedicate this production as a tribute to Lester Malizia, for whom he originally designed this show at Seaside Music Theatre. Some of the drops you'll see tonight were used in that original production.



**Lamar Hickley** (Sound Designer/Director of Sound) has always been involved with the Arts. Since the age of 8, he has acquired the skill to play multiple instruments and gained knowledge in the area of sound reinforcement. He has over 20 years of experience as a recording engineer, in live mixing, and music production. In 2012, he received his AS degree in Music Production Technology and in 2014 he received his BAS in business supervision and management. Lamar's passions in the industry of audio granted him the "Most Outstanding Student" award in 2012. As a result, he was selected as the face of the Music Production Technology at Daytona State College. In 2016, Lamar was introduced to the Athens family and is honored to have his company "Kevin Majestic Productions," responsible for ensuring all the audio needs are met with nothing but the best sound and quality!



**Nicholas Hogan** (Lighting Designer) is excited to be working with the Athens as Director of Lighting/Assistant Technical Director. Nick found his passion for lighting in early high school, practicing design at the historical Barn Theatre in Stuart, Florida. After high school, Nick went on to find employment in various lighting positions in places such as the Maltz Jupiter Theatre, the Lyric Theatre, and the Orlando Repertory Theatre. Nick is responsible for the lighting design and execution of the Athens mainstage shows as well as their limited engagement performances.

Where customers always get  
red carpet treatment!



**MAINSTREET**  
COMMUNITY BANK  
OF FLORIDA

*Celebrating 20 Years  
in Volusia County*



**BankOnMainstreet.com**

**(386) 734-5930**

Member  
**FDIC**

DeLand | Orange City | Holly Hill | Clermont | Ocala | Longwood





# Meet The Production Team



**Tamara Marke-Lares** (Resident Costume Designer) is a sculptor, painter, printmaker, and creature marionette maker. She has been designing costumes freelance for 19 years. She has designed for Dance, Ballet, Opera and Cirque productions, as well as numerous collaborative and solo productions. Some favorite costume credits include *Margaritaville*, *Rock of Ages*; *Ragtime*, *Shrek*!, *Elf*; *Clue*; *Ain't Misbehavin'*; *Jerry's Girls*; *Chicago*; *The Complete Works of William Shakespeare, Abridged*; *James and the Giant Peach*; *Guys and Dolls*; *Into the Woods*; *The Wedding Singer*; *Jekyll & Hyde*; *The Lion King, Jr.* and *The Producers*. This is her sixth season with the Athens Theatre. Tamara spends her days teaching at Ivy Hawn Charter School, creating art and costumes and being amazed by her two crazy-talented children.



**Tori Oakes** (Scenic Designer/Prop Designer/TD/Scenic Build) is a Central Florida based technical director and scenic designer. She is, as always, happy to be working at the Athens Theatre. Previous designs at the Athens include *Misery*, *Margaritaville*, *Rock of Ages*, *The 25th Annual Putnam County Spelling Bee*, *Ragtime*, *Shrek TYA Version*, *Elf*, *Chicago*, *Mamma Mia!*, *The Fantasticks!*, *9 to 5*, *Into the Woods*, *The Producers*, *Jekyll & Hyde*, *The Wedding Singer*, *Oklahoma!*, *Arsenic & Old Lace*, *Aladdin, Jr.*, *Sister Act*, *Driving Miss Daisy*, *James and the Giant Peach*, *A Christmas Carol*, *The Addams Family*, *Cabaret*, and *White Christmas*. Tori is the owner of Misfit Toys Theatrical LLC, an Orlando based production company that, in addition to building scenery for Athens Theatre productions, provides various scenic and properties services for a number of theatrical organizations from Central Florida to New England. Tori holds an MFA in theatre from the University of Central Florida.



**Bonnie Sprung** (Scenic Charge Artist) is very happy to be back with Athens Theater after scenic painting *Scrooge*, *Hunchback of Notre Dame* and *Escape from Margaritaville*. Bonnie has a BA from Hofstra University in Set Design and Graphics, along with her AA from Valencia Community College in Fine Art. She has done set design, scenic painting, make-up and stage management for over 200 shows in Orlando and New York. She worked as Set/Scenic designer for the BCC Summer Fine Arts program and the JCC Center Players. Stage Manager, Sound and Graphics for Summer Winds Theatre. She has also designed for GenY Productions, Florida Theatrical Association, First Academy Middle and High School, Westridge Middle School, Boone High, Lake Brantley High, Central Florida Community Arts, Gotha Middle School, The Masters Academy and JCC Youth Academy. Some of her nominated designs include, *Cabaret*, *The Flick*, *Bat Boy the Musical*, *Jane Eyre the Musical*, *Torch Song*, *Clybourne Park*, *Perfect Arrangement*, and *Hysteria*. Bonnie has over 30 yrs. experience in curating, judging various art exhibits and thespian competitions. She is a member of the Women's Caucus For Art and is a past president of the FL chapter. Currently she is on the Seminole Cultural Arts Council Board. Bonnie, has shown her fine artwork and has received several awards. [www.BonnieSprung.com](http://www.BonnieSprung.com).

The Athens Theatre Presents

# LIVERPOOL LEGENDS

The Complete BEATLES Experience!



January 20th • 4 & 8pm

## SPONSORS & DONORS MAKE IT HAPPEN!

### GET RECOGNIZED FOR YOUR SUPPORT!

When you make a donation of \$100 or more, your name will be recognized in the Athens Theatre Company playbills for the next year!



### TAKE A SEAT CAMPAIGN

Honor Your Family • Celebrate a Birthday  
Remember A Loved One • Rejoice A Birth  
Commemorate A Marriage

*These are all great reasons to name a seat at the historic Athens Theatre. As a seat donor, your name or that of a loved one will be engraved on a permanent brass plaque on the back of a luxurious, custom-designed seat. You will also be added to the Share the Spotlight Sponsor panel on the Donor Appreciation Wall located in the lobby. Premium Seats are still available for:*

**\$1,000, \$750 or \$500**

**ORDER YOUR SEAT OR MAKE A DONATION**

by calling (386) 736-1500 or email [DonorSupport@AthensDeLand.com](mailto:DonorSupport@AthensDeLand.com)

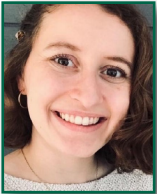




# Meet The Production Team



**Diane McLean** (Production Supervisor) is a professional stage manager with over 30 years experience in regional, touring, and Off Broadway theater, as well as film and higher education. She received her MFA in Stage Management from Boston University. She has stage managed for The Kennedy Center, Manhattan Theatre Club, Berkshire Theatre Festival, Huntington Theatre Company, Lyric Stage Company, Boston University College of Fine Arts, and Boston University Tanglewood Institute, to name a few. Film credits include *War of the Worlds*, directed by Steven Spielberg and Stephanie Daley starring Tilda Swinton. In addition to her work at the Athens Theatre, she is a professor and mentor to students at the Mike Curb College of Music, Entertainment, & Art at Daytona State. She is also the former Professor of Theatre at Endicott College in Beverly, MA. She'd like to thank Frank and the staff and board of the Athens Theatre for the opportunity to engage in theatre once again in her new hometown of DeLand. Love to H, C, and G.



**Avery Tyler** (Assistant Stage Manager) is excited to be part of the *White Christmas* team! At the Athens, she can be found behind the scenes, most recently stage managing *Misery* and *The Hunchback of Notre Dame*. She has also been ASM for *Noises Off*, *Scrooge!*, *Young Frankenstein*, and *Rock of Ages*. When not at the Athens, Avery teaches English and assists with the theater department at Deltona High School. She would like to thank the cast, crew, and production team for all their hard work, as well as thank the audience for supporting the arts in their community. Happy Holidays!



**Amy Uppercue** (Costume Shop Manager) has been working behind the scenes at the Athens Theatre since 2011, and has loved being a part of all the magic that has been created on our stage. Favorite costume design credits include *The 25th Annual Putnam County Spelling Bee*, *The Little Mermaid, Jr.*, *A Year with Frog and Toad*, *Legally Blonde: the Musical*, and *Footloose*. In addition to running the Athens Costume Shop, Amy is also a teaching artist for the Athens Theatre Youth Academy, and serves on the board of the National League of Junior Cotillion West Volusia Chapter and the DeLand Choir Parents Association. So much love to C, HK, AB and B. Enjoy the show!

Modern & Bright Workspace • High Speed Internet • Onsite Printer • Always Fresh Coffee








**VISION & HEELS**  
FUELING & EMPOWERING WOMEN THROUGH COWORKING

100 E. New York Ave., Suite 103  
Downtown DeLand, FL 32724  
386.977.9637 • [info@visionandheels.com](mailto:info@visionandheels.com)  
[visionandheels.com](http://visionandheels.com)

Onsite Mailbox • Office Supplies • Conference/Podcast Rooms • Flexible and Easy Booking

THE ATHENS THEATRE PRESENTS

Florida  
**Bee  
Gees**  
Tribute Band



**FEBRUARY 16**  **5:00PM - 8:00PM**

OVER 20 YEARS SERVING OUR COMMUNITY.



**Kemp**  
REALTY GROUP

Listening... Connecting... Buyers and Sellers



**Two Convenient  
Downtown Locations!  
135 E. Church St.  
& 110 W. Indiana  
Give us a call at  
386.801.4276**

**Search Listings at [www.LiveLoveDeLand.com](http://www.LiveLoveDeLand.com)**



*Get a Smile Worthy of a Standing Ovation!*

**DALE D. BATTEN, DMD, MAGD**  
*Cosmetic and Comprehensive Dentistry*

CROWNS • BRIDGES • IMPLANTS • FILLINGS • EXTRACTIONS  
DENTURES • COSMETIC DENTISTRY • VENEERS  
TEETH WHITENING • PERIODONTAL THERAPY

123 W. Plymouth Ave. • DeLand, FL 32720  
386-736-8865 • [www.BattenDental.com](http://www.BattenDental.com)





# Meet The Administrative Team



**Alexa Baldwin** (Executive Director) is a graduate of Kent State University with her BFA in Musical Theatre. After twelve years of working in the theatre industry and managing the offices of several companies, Alexa became the Director of Marketing and Operations for the Sands Theatre Center (DBA - Athens Theatre) in July of 2011. In 2021, she was made the theatre's Executive Director.

Among other shows, she has appeared on the Athens Theatre's stage as Sandy in *Grease*, Fantine in *Les Misérables*, and as Roz in *9 to 5 the Musical*. She has dedicated her life to working with an incredible family of co-workers and volunteers to make the Athens Theatre a representation of what community theatres can strive to be—both onstage and off. In addition to her theatre family, she is fortunate to have an incredible husband and daughter who are endlessly patient and supportive with all thing Athens Theatre. Mrs. Baldwin thanks everyone in the cast, crew, production team, and ALL the staff for the tireless hours they spent making tonight's magic happen. She hopes that you enjoy the show and come back to visit us again soon.



**Frank Ramirez** (Producing Artistic Director) is a dedicated entertainment professional with over twenty-plus years of experience. His journey in the arts has taken him behind the scenes, on stage, in union management, production management, stage management, general arts management, production direction, and creative guidance on multiple levels in the arts industry. He joined the Athens Theatre in 2018, has directed numerous mainstage productions on the Athens

stage, and is thrilled to be the Producing Artistic Director for this beautiful jewel of a theatre in the heart of Downtown DeLand. In the past, Frank has been part of multiple productions and organizations on Broadway, Off-Broadway, professional regional theatres, event management, and theme park entertainment management. He has also been associated with The Jim Henson Company via Heather Henson's IBEX Puppetry, where he served as Company Manager and facilitator of their worldwide full-scale theatrical productions in Canada, China, Kazakhstan, Indonesia, and nationally across the USA. Frank also worked as a guest artist instructor of Stage Management at SUNY Potsdam/Crane School of Music. Mr. Ramirez works with the Executive Director and Board of Directors to help steer the creative vision for the Athens Theatre. This includes working with a committee to develop play selections, production schedules, and budgets. He is responsible for hiring and overseeing all staff necessary to prepare for and present each Athens Theatre Company production. In addition, he oversees the production management aspect for all live events on the Athens stage.



SERVING WEST VOLUSIA



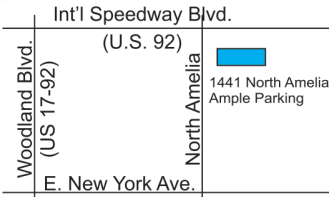
**print • signs • solutions**

**FULL SERVICE PRINTING  
SIGNS & BANNERS**

**386-736-1353**

WHEN  
**QUALITY**  
REALLY  
MATTERS

**LOCATION**



**1441 N. AMELIA AVE. IN DELAND**

**HOURS:  
8:30 TO 5:00  
MONDAY - FRIDAY**



**OWNERS - STEVE & DONNA WHITE**

**WWW.QUALITYQUICKPRINT.COM**





# Meet The Administrative Team



**Craig Uppercue** (Development & Community Partnership)  
 A Stetson University alumnus, Mr. Uppercue has taught for 18 years in the public school systems of Florida from the Elementary to Collegiate levels. Craig is the Music Director of the Off-Broadway National Tour *The Rock & The Rabbi* and performs with the show when available. Other performing opportunities include Broadway and Off-Broadway credits such as *The Witnesses Musical* (Original Cast member), *The Lion King*, *Songs for a New World* and numerous national tours throughout the U.S. He is actively involved with many professional symphonies, and maintains an active performing schedule with professional artists throughout the nation. Mr. Uppercue has been with the Athens Theatre since 2011, and he has directed many musicals and plays at the Athens as well, most recently *Shrek TYA!* Craig and his wonderful wife, Amy, live locally, enjoying every moment as they watch their three daughters grow up!



**Santi Gabino Jr.**, (Marketing and Communications Manager), a native of South Florida, made the exciting decision to relocate to DeLand in the Summer of 2022. With a rich background in event management, Santi served as the Executive & Marketing Director of a highly successful venue in Homestead, FL for over 11 years. During his tenure on his family’s estate, he orchestrated nearly 100 weddings, attracting attention from renowned publications like *Allure Bridal* and *Modern Bride* for magazine shoots. The venue also became a prime location for television filming and hosting esteemed networks such as Nickelodeon and Telemundo.

He also spearheaded the creation of a wildly popular Farm to Table dinner series. Having cultivated a substantial social media following in his previous role and drawing upon his expertise, he now oversees the creation of all marketing materials, social media strategies, business to business promotions, and the crafting of all press releases and public communications.



## The Athens Theatre is always seeking

# Volunteers

Ushers • Tech Crew • Misc.  
Ages 16+



Email: [Marketing@AthensDeLand.com](mailto:Marketing@AthensDeLand.com)

# TICKET TO THE MOON ELO TRIBUTE



ATHENS THEATRE  
CONCERT SERIES

February 17 • 7:30pm



## **Fleishel**

FINANCIAL ASSOCIATES

*Clarity and Confidence for Life®*

Providing Clarity and Confidence is what we do,  
Helping you live by design is who we are

## Investment Management and Financial Life Planning

812 N. Woodland Blvd, DeLand, FL 32720 - (386)738-1800  
12443 San Jose Blvd, Suite 601, Jacksonville, FL 32223 - (904) 262-9808  
[FleishelFinancial.com](http://FleishelFinancial.com)

Securities offered through Raymond James Financial Services, Inc. Member FINRA/SIPC  
Fleishel Financial Associates is not a registered broker/dealer and is independent of Raymond James Financial  
Services, Inc. Investment advisory services offered through Fleishel Financial Associates and  
Raymond James Financial Services Advisors, Inc.

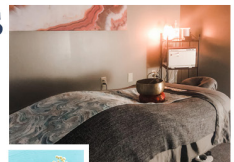


Scan Now!



### SPA • YOGA • WELLNESS

## BODHI + SOL



136 S. Woodland Blvd. • DeLand, FL 32720  
386-507-2310 • [deland@bodhiandsol.com](mailto:deland@bodhiandsol.com)





# Meet The Administrative Team



**Roberta (Bobe) Kenemer** (Resident Graphic Artist) is a graduate of Ringling College of Art & Design (formerly Ringling School of Art), majoring in Graphic Arts & Illustration. After relocating to Volusia County in 1982, Bobe worked for a small publishing company and as a Cartographer before accepting a position at Tennant Printing Company in DeLand. She gained extensive experience in the Graphics Department of various printing companies, along with numerous freelance projects,

before assuming her role with the Athens Theatre in the fall of 2019. As the sole image designer for the theatre and the Athens Theatre Youth Academy, her graphic design skills play an integral role in the theatre’s visual identity. She takes immense pride in being part of the Athens Theatre family and eagerly anticipates the opportunity to contribute to the creative journey of each upcoming production and event.



**Shonda L. Thurman** (Diversity, Equity, and Inclusion Advocate)

Born and raised in Flint, MI, Ms. Thurman holds a BFA in Musical Theatre from Roosevelt University, in Chicago, IL, and Stephens College in Columbia, MO. She also holds a theatre management certification from Tiffany Vega Management. Shonda is currently the curriculum manager for the Orlando Family Stage and current co-chair for the Juneteenth lunch and Learn Facts of Freedom. Her performance credits

range from local to all over the country in national tours. In her roles as a DEIA, performer, director, and educator she believes that everyone deserves a voice, their stories told and heard, and themselves represented in whatever arena they choose. “I am not a teacher I am an awakener.” ~Robert Frost.



# VTS

Reliant Title Group, Inc. d/b/a

## Volusia Title Services

**WHETHER YOU ARE BUYING OR SELLING A HOME, LET OUR EXPERIENCE AND EXPERTISE GUIDE YOU THROUGH THE CLOSING AND SETTLEMENT PROCESS.**

Office 386.279.4828 Fax 386.279.0048

109 West Rich Avenue • DeLand, FL 32720

Relianttitlegroup.com

*Serving Central Florida for over 35 Years*



the **PARTY** EXCHANGE

YOUR ONE STOP PARTY SHOP!

**YOUR COMPLETE SOURCE  
FOR DECORATIONS,  
PLANNING SERVICES,  
RENTALS, AND COSTUMES!**



**2436 S. VOLUSIA AVE.  
ORANGE CITY  
(386) 774-8477**



# We Thank our Athens Theatre Staff

**EXECUTIVE DIRECTOR**  
ALEXA A. BALDWIN

**ARTISTIC DIRECTOR**  
FRANK RAMIREZ

**PRODUCTION SUPERVISOR**  
DIANE MCLEAN

**MARKETING &  
COMMUNICATIONS  
MANAGER**  
SANTI GABINO

**MARKETING ASSISTANTS**  
ANGELYN RHODE  
LAUREN JAMES

**DIRECTOR OF SOUND**  
LAMAR HICKLEY

**DIRECTOR OF LIGHTING**  
NICHOLAS HOGAN

**FACILITY MANAGER**  
ALAN WARE

**ASST. FACILITY MANAGER**  
CJ MERRELL

**HOUSE MANAGERS**  
AMANDA TYLER  
CLIFFORD STRACHMAN

**COSTUME & PROP SHOP  
MANAGER**  
AMY UPPERCUE

**YOUTH ACADEMY MANAGER**  
ANGELYN RHODE

**RESIDENT GRAPHIC ARTIST**  
BOBE KENEMER

**BOX OFFICE**  
JENNI SWEINHAGEN  
KAY PHILLIPS  
BRIANA HOLLOMAN  
LAUREN JAMES  
ASHLEY HEW  
IRENE LEO

**ATHENS ACCOUNTANT**  
PAM KEEZEL

**DEVELOPMENT &  
COMMUNITY  
PARTNERSHIP**  
CRAIG UPPERCUE

**DIVERSITY, EQUITY &  
INCLUSION ADVOCATE**  
SHONDA THURMAN

## In your corner & around the corner

**Amanda Agnew Ins Agency Inc**  
Amanda Agnew, Agent  
120 S Woodland Blvd, Suite B  
DeLand, FL 32720

Bus: 386-960-7878  
[www.insurewithamanda.com](http://www.insurewithamanda.com)

Like a good neighbor, State Farm is there.®

State Farm  
Bloomington, IL





When you are tired of dealing with unreliable computer consultants who are impossible to reach, nickel and dime you over everything, and fail to deliver the level of service you expect...



**phintec**  
making technology simple

[www.phintec.com](http://www.phintec.com)

321-214-2500



WE THANK

3 Smart Cookies  
any occasion - royal icing cookies  
386-479-1069

FOR HELPING CATER OUR BOX SEATS

[WWW.3SMARTCOOKIES.COM](http://WWW.3SMARTCOOKIES.COM)

Globally Inspired cuisine featuring fresh local seafood, prime steaks, and more!

**c r e s s**  
RESTAURANT

Seating reservations and walk-ins  
Tuesday - Saturday 5pm to 9pm

103 W. Indiana Ave, DeLand, FL 32720 ♦ 386-734-3740 ♦ [cressrestaurant.com](http://cressrestaurant.com)



Ask for our Athens Theatre Pre-show 3-course Prix Fixe Menu  
(please allow 1.25hrs+ for dining)

# What's Playing Around You?

## THE CENTRAL FLORIDA THEATRE ALLIANCE

### Daytona Playhouse

Daytona Beach  
DaytonaPlayhouse.org  
**December 8 - 17**

**Grand Re-Opening!**



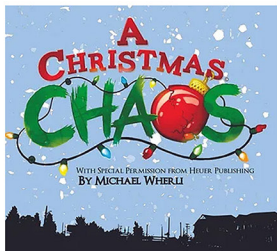
### Flagler Playhouse

Bunnell  
FlaglerPlayhouse.com  
**December 6**



### Shoestring Theatre

Lake Helen  
ShoestringTheatre.net  
**December 1 - 17**



### The Little Theatre

New Smyrna Beach  
NSBPlayers.org  
**Nov 30 - Dec 10**



### The Ritz Theater

Sanford  
ritztheatersanford.com  
**March 8 - 16**





THE STATIONS OF

**WSBB** AM 1230 • AM 1490  
**106.9** FM

*Clearly* THE GREAT VOICE OF VOLUSTIA COUNTY

PLAYING THE BEST MUSIC EVER CREATED.  
ARTISTS INCLUDING FRANK SINATRA, MICHAEL BUBLE, ELLA FITZGERALD,  
HARRY CONNICK, JR., ROD STEWART, TONY BENNETT, AND MANY MORE.

# ADESSO

DRYWALL SERVICES

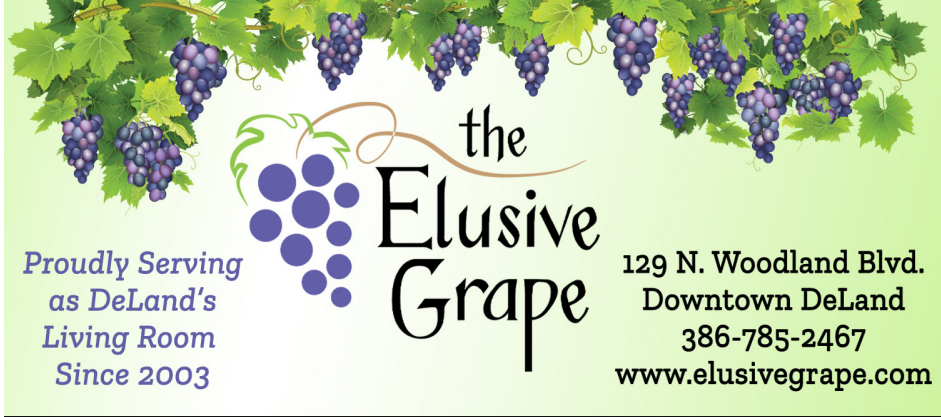
# & Son



ADESSOANDSONDRYWALL@HOTMAIL.COM • OFFICE: 386.878.5854



*Where good friends and good wine meet.*



Proudly Serving  
as DeLand's  
Living Room  
Since 2003

the  
**Elusive  
Grape**

129 N. Woodland Blvd.  
Downtown DeLand  
386-785-2467  
[www.elusivegrape.com](http://www.elusivegrape.com)

*A proud sponsor of the Athens Theatre's Box Suite Packages.*



Pat and Toni's  
**Sweet Things**

**CHOCOLATE - CANDY  
FUDGE - ICE CREAM  
& NOSTALGIA**

*The Sweetest Place in Town*

124 N WOODLAND BLVD DOWNTOWN DELAND  
386-734-0066

# ATHENS THEATRE DONORS

## GOVERNMENT SUPPORT

City of DeLand  
 Cultural Council of  
 Volusia County  
 State of Florida Division of Cultural  
 Affairs  
 Volusia County

## \$15,000-\$25,000

Jay & Karen Keller

## \$10,000-\$14,999

Dr Bruce & Carolyn Bigman

## \$4000-\$6,999

Kristin Bright  
 Bill & Pam Brown  
 Clifford & Lavinne Strachman

## \$2,000-\$3,999

Pamela & Rick Rintz  
 Burt & Arleen Rosenberg  
 Steven Smith

## \$1,000-\$1,999

Deborah Etsy  
 Mayor Chris Cloudman  
 Frances R. Foundation  
 William Holler III  
 Richard & Paula Kelton  
 Lacey Foundation  
 Dennis & Lynn Laube IMO

Eleanor H. Dorbert  
 Phyllis A. Miller  
 Pat & Toni's Sweet Things  
 Claudia & Stephen Roth

## \$500-\$999

Nancy Atkins  
 Samuel Atkinson  
 Joan & Taver Cornett  
 Tricia Danielsen  
 DeLand Pride  
 Albert Eid  
 Richard M. Kelton  
 Jeffrey Norton MD  
 Robert & Mary Dell Paterno  
 Dori Steinman & Clay Fraga  
 Donald & Leslie Whalen  
 Richard & Laura Wyrick

## \$250-\$499

William & Leanne Adams  
 Rosenberg Burton  
 Shannon Chausse  
 Sharon Chausse  
 Nicole Colangelo  
 Tracey Danielsen  
 John & Sandra Dash  
 Greg & Tiffany Freed  
 Kevin & Carmen Gallagher  
 Lionel Hector  
 Lonna Heffington  
 Dawn & Rudi Hoffman

Shirley Horn  
 Jack & Jane Manwaring Foundation  
 Michael Myers & Melinda Lufkin  
 Michael Myers  
 Mary Paterno  
 Jane Pelis  
 Lori Pinkalla  
 Janet Rhode  
 Frank & Carol Riccardio  
 Scott Roser  
 Stephen & Debra Ryan  
 The Sarnes Family  
 Schmude Family  
 Ann & Ken Shanley  
 Carla Spalding  
 Karissa Taylor  
 Timothy Taylor  
 Scott & Christine Tuell  
 112 West LLC  
 Nancy Zook

SCAN QR CODE FOR LINK OR  
 VISIT [ATHENSDELAND.COM](http://ATHENSDELAND.COM)  
 TO DONATE!



## \$100-\$249

Paul F. Abbott  
 Becky & Anthony Adesso  
 Ambrico Family Foundation  
 Ana T Arnaiz  
 Suzanne Atkinson  
 Glenn Avidon  
 Alexa & Robert Baldwin  
 Elaine & Bruce Barritt  
 Linda Bindler  
 Robert Botchick  
 Linda Breckenridge  
 Dot Brown  
 Celeste Brozovich  
 Deborah & Dean Burke  
 Thomas Cacek  
 Susan Carrier  
 Vicki Chamelin  
 Anita Clark  
 Sandra Colon  
 Daniel & Chelsea Conard  
 Chad & David Conley  
 Jean Conner  
 Kay Cordero  
 Bernice Comella  
 Amanda Cortright

Janelle Davis  
 Randy Deveaux  
 Jeff Dickinson  
 Ann Dobranic  
 Gary Doswell  
 Thomas Douttily  
 Mary Ellen Early  
 The Falasco Family  
 William Feyk  
 Thomas & Rebecca Fleishel  
 James Galzerano  
 Gloria Gardner  
 Bonda S. Garrison  
 Dr. & Mrs. Rhonda Gilliard  
 Jim Goldschneider  
 Ella Hall  
 Bill & Tree Hazard  
 Debra Height  
 Stanley A Higley  
 Dawn & Rudi Hoffman  
 Margaret Whitlow Howard  
 J&J Security  
 Rev. Kent & Peg Klophas  
 The Kemp Family  
 Tyler Kosmas State Farm

Dr. Irwin & Kathryn Landau  
 Dennis Laube  
 Laureate Alpha Upsilon  
 Tracy Lunquist  
 Robert Martin  
 Dr Richard Martorano  
 Peter Mastropolo  
 Sarah McAskill  
 Jeff McMullan  
 The Miles Family  
 Donna Miller  
 Stephen & Joanne Mosher  
 Rob & Nancy Nauty  
 Mark Neff  
 Paula Olivero  
 Beth Pattison  
 Heidi Payne  
 Diane Reed  
 Gary & Josephine Rinkerman  
 Scott Roser  
 Donna Ross  
 Marty & Ali Ross  
 Stephen & Claudia Roth  
 Stephen & Debra Ryan  
 Gary Seor

Madeline Schilling  
 Kenneth Shanley  
 Shelby Smialek  
 Dennis Sobock  
 Larry Sorensen  
 Charlie Spells  
 Ramona Stares  
 Larry Stein  
 Elizabeth Strange  
 Howard Strange  
 Sarah Thomas  
 Laureate Alpha Upsilon  
 Justin Van Putten  
 Allison Van Zandt  
 The Wagoner Family  
 Scott & Karen Weiss  
 Donald and Leslie Whalen  
 Judy Whitelock  
 David Whitmore  
 Pamela Whittet  
 Susan Williams  
 Allisan Van Zandt  
 Sally VanderZanden  
 Howard Vann

All listed have made a donation to the Athens Theatre within the last 12 months.

*Thank you for supporting the Athens Theatre*

**We thank our  
Share the Spotlight Sponsors!**



**MBI**



The Daytona Beach  
**News-Journal**  
news-journalonline.com



The West Volusia  
**Beacon** EXTRA!



**JOE HEARN**  
events



Advanced Urology Institute  
Anthony J. Visconti, III, DMD  
Artisan Downtown  
Bodhi + Sol Spa  
Cress Restaurant  
Dale D. Batten, DMD, PA  
Kemp Realty Group

Marketplace at Rivertown  
Phintec  
Reliant Title Group, Inc.,  
d/b/a Volusia Title Services  
Sanz & Sanz Psychological Associates  
Turn-Key Designs  
Vision and Heels







# Help Renew and Preserve **DELAND HOUSE**

Heritage • Community • Legacy



To preserve and promote the history of West Volusia County

The West Volusia Historical Society was founded in 1973 as a 501(c)(3) not-for-profit, all-volunteer organization dedicated to researching, preserving and publicly sharing the rich history of West Volusia County.

Delivering quality educational programming to residents and visitors, fostering local history research, and encouraging heritage preservation.

**MAKE YOUR DONATION  
EASILY BY SCANNING HERE**



**West Volusia Historical Society**

137 W. Michigan Avenue

DeLand, FL 32720

386.740.6813

[info@westvolusiahistoricalsociety.org](mailto:info@westvolusiahistoricalsociety.org)

**SHOW YOUR COMMUNITY SUPPORT AND  
BECOME A MEMBER  
OF THE WEST VOLUSIA HISTORICAL SOCIETY TODAY!**

AD SPACE GENEROUSLY DONATED BY



PROUDLY SUPPORTING OUR COMMUNITY.