

In Association with Music Theatre International
The Athens Theatre Presents

Disney

BEAUTY AND THE
BEAST

Music by Alan Menken Lyrics by Howard Ashman & Tim Rice Book By Linda Woolverton

July 12 - August 4

© 2024
Mike Kitaif

PRESENTING SPONSOR
MBI
DIRECT MAIL - DIGITAL

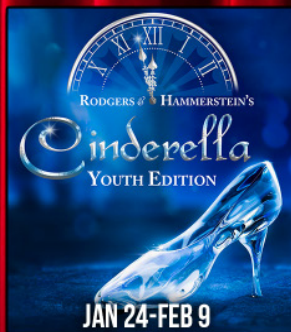
Disney's Beauty and the Beast is presented through special arrangement with Music Theatre International (MTI).
All authorized performance material are also supplied by MTI. www.mtishows.com

ATHENS THEATRE 2024-2025 SEASON



Embark on a thrilling odyssey with our spellbinding 2024-2025 season where each performance will transport you to captivating realms, leaving you on the edge of your seat and craving more. From the heart-pounding excitement of *Dracula* to the nostalgic hip-shaking of *Grease*, the enchanting journey of *Beauty and the Beast*, and the heartwarming tale of *A Christmas Carol*, our lineup is a jubilant celebration of creativity and unforgettable moments. Experience the rollicking fun of *The Full Monty* and the timeless charm of *Rodgers & Hammerstein's Cinderella: Youth Edition*. With each show, we guarantee an immersive experience, inviting you to dive headfirst into a world where enchantment knows no bounds. Brace yourself for a rollercoaster of emotions as we unveil a season as diverse as it is dazzling, full of strength and rooted in the virtually limitless power of the human spirit.

Frank Ramirez
Producing Artistic Director



ORDER YOUR SEASON TICKETS AND SAVE!
www.AthensDeLand.com



All events are sponsored in part by the Cultural Council of Volusia County and Volusia County.



Disney **BEAUTY** AND THE **BEAST**

Music by
Alan
Menken

Lyrics by
Howard Ashman
& Tim Rice

Book by
Linda
Woolverton

Originally Directed by
Rob Roth

Originally Produced by
Disney Theatrical Productions

Incidental Music and New Vocal Arrangements by Michael Kosarin. Vocals Originally Arranged by David Friedman. Dance Music Arrangements by Glen Kelly. Orchestrations by Danny Troob

Director, Choreographer
Mayme Paul

Music Director
Chris Endsley

Assistant Choreographer
Lauren Stromak

Scenic Design
Michael Brewer

**Prop Designer/
Scenic Builder/TD**
Tori Oakes

Costume Designer
**Maine State Music
Theatre Costumes**

Lighting Designer/ATD
Nicholas Hogan

Sound Designer
Lamar Hickley

**with additional
costumes by**
Tamara Marke-Lares

Producing Artistic Director
Frank Ramirez

Sound Manager
Dylaney Sabino

Scenic Charge Artist
Bonnie Sprung

Costume Shop Manager
Amy Uppercue

**Production Supervisor/
Stage Manager**
Diane McLean

**Assistant Stage Manager/
Deck Manager**
Avery Tyler

July 12th - August 4th | The Athens Theatre

Disney's Beauty and the Beast is presented through special arrangement with Music International (MTI)

All authorized performance materials are also supplied by MTI. www.MTIShows.com

SUPPORT FROM



PROUD ATHENS THEATRE SPONSOR

C. A. PHILLIPS

2,351,834

HEYERLEIGH PHOTOGRAPHY CAMERA

Filed May 2, 1940

3 Sheets-Sheet 1



THE STUDIO

CREATIVE GROUP

EMMY AWARD WINNING
FILM & PHOTOGRAPHY STUDIO

(407) 900-9153

WWW.THESTUDIOCREATIVEGROUP.COM

Athens Theatre 2024-2025 Board of Directors

Joseph Maxwell, President
Christopher Kemp, Vice President

Jay Keller, Secretary
Michael Kelton, Treasurer

Jeffrey Bates
Daniel Conard
Joyce Darch
Stephen Dornsife
Donald Fields
Tom Fleishel

Lyndsay Fuller
Irwin Landau
Robert Mann
Pamela Rintz
Judith Whitelock
Michael Wingo



All events are sponsored in part by the
Cultural Council of Volusia County and Volusia County.



Director's Notes...

Disney's Beauty and the Beast is truly a tale as old as time. Its endurance through the years, I believe, is due in part to its emphasis on a theme that transcends the story itself. That theme being the power of learning to see past each other's differences and find commonality in our humanity. It's a beautiful message to embrace, now more than ever.

Beauty and the Beast is said to be the second most familiar fairytale after *Cinderella*. Fairytales lure us in with fantasy, adventure and romance, but it seems to be the moral questions and lessons that each tale weaves that bring us back to the story again and again. They are neither historical nor contemporary, but ever present in our everyday life.

It has taken more than a "small provincial town" to put this production together. Thank you Frank for fostering a community of love and support in this theatre. It is always a pleasure to be involved here! So sit back, relax, and "Be Our Guest"!

Mayme Paul

Disney's Beauty and the Beast Director



NOTE TO AUDIENCE: - The videotaping or audio and/or visual recording of this production is a violation of United States Copyright Law and an actionable federal offense.

OUR CUSTOMERS
TAKE
CENTER STAGE!



MAINSTREET
COMMUNITY BANK
OF FLORIDA

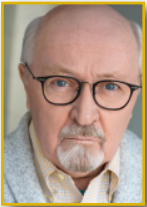
BankonMainstreet.com

Member
FDIC

Meet The Cast



Lauren Bowrosen (Les Filles #1, U/S Babette) is a freshman in the BFA Musical Theatre Program at The University of Central Florida. She has been seen on the Theatre UCF stage in *The Prom* (Swing), and *Sweeney Todd: The Demon Barber of Fleet Street* (Swing). Her theatre credits include an Applause Award win for her portrayal of Janis Sarkisian in *Mean Girls*, Velma Kelly in *Chicago*, and Elsa in *Frozen, Jr.*
TikTok: @m1n0nl0ver Instagram: @laurenbowrosen



Brian Allan Chambers (Maurice) is an Orlando-based actor returning to the Athens Theatre stage having last been seen here as Grandfather in *Ragtime*. Other regional credits include *Grumpy Old Men* (Grandpa), *West Side Story* (Doc), *School of Rock* (Gabe Brown), *Into the Woods* (Narrator/Mysterious Man), *Cabaret* (Herr Schultz), *NEWSIES: The Musical* (Joseph Pulitzer), *Something Rotten* (Shylock), *It's a Wonderful Life: The Musical* (Clarence), *Miracle in Bedford Falls* (Clarence), *Meet Me in St. Louis* (Grandfather), *Beauty and the Beast* (Maurice), *Tuesdays with Morrie* (Morrie Schwartz), *It Shoulda Been You* (Walt/Uncle Morty), *The Fantasticks* (Bellomy), *Sunday in the Park with George* (Mister), *A Philadelphia Story* (Uncle Willie), *Animal Crackers* (Hives/Chandler), *The Royal Family* (Hubert Dean), *Miracle on 34th Street* (Kris Kringle), and *A Tennessee Walk* (Spit). Enjoy the show and no matter what you do, I'm on your side!

FALL AFTER SCHOOL REGISTRATION IS OPEN!



For more information or to sign up: www.athensdeland.com/youth-theater/
Email: Education@athensdeland.com • Phone: 386-736-1500 Opt. 3

SHOW SOME LOVE!



ACTOR & CREW DONATION FUND



Belle's Enchanted Experience

July 27th

PRIVATE CHILDREN'S EVENT
 5:00 - 6:30 PM
 (Immediately following the 2:30 pm performance)

- 2 Professional pictures with Belle and friends!
- Special Sing-along Dance Party
- Story Time with Mrs. Potts
- Custom gift bag full of treats
- Signed Cast Poster
- Tickets include admission for 1 child AND 2 parents/guardians

AthensDeLand.com



Fleishel
 FINANCIAL ASSOCIATES
Clarity and Confidence for Life®

100 Celebrating **YEARS**
 BUILDING ANNIVERSARY



Providing *Clarity and Confidence for Life®* is what we do.
 Helping people live life by design is who we are.

Investment Management and Financial Life Planning

812 N. Woodland Blvd
 DeLand, FL 32720
 (386)738-1800



12443 San Jose Blvd, Suite 601
 Jacksonville, FL 32223
 (904) 262-9808

FleishelFinancial.com

Securities offered through Raymond James Financial Services, Inc. Member FINRA/SIPC. Fleishel Financial Associates is not a registered broker/dealer and is independent of Raymond James Financial Services, Inc. Investment advisory services offered through Fleishel Financial Associates and Raymond James Financial Services Advisors, Inc.

Enhance your Child's Skill and Performance Technique.



PRIVATE VOICE, ACTING AND DANCE LESSONS

LESSONS AVAILABLE FOR AGES 7 AND UP



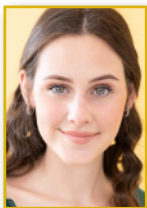
For more information or to sign up, go to athensdeland.com/lessons or email Education@AthensDeLand.com



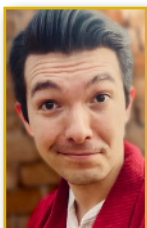

Meet The Cast



Savanna Dacosta (Les Filles #2, U/S Mrs. Potts) is unbelievably excited & grateful to be back on the Athens Theatre stage after first appearing in *The Hunchback of Notre Dame* last year. Some past favorites include playing Izzy in *Rabbit Hole*, Kayleen in *Gruesome Playground Injuries*, Nancy in *Oliver!*, Martha in *Spring Awakening*, and Louise Badger in *Holiday Inn*. Off-stage, Savanna also orchestrates the happenings of her startup theatre production company, The Dream Role Society, alongside partner Marcus Roberts. She'd like to share her gratitude toward Mayme & Chris for this opportunity, as well as the rest of the Athens team for the incredibly hard work it takes to put on such memorable productions at this scale. She'd also like to thank Christie for being the coolest teapot in the cabinet to understudy, as well as her parents, Nessie and Marcus, for always running lines and filling seats. Enjoy the show, and have a silly, good time!



Ally Duffy (Ensemble, U/S Les Filles De La Ville) is so excited to be making her Athens debut! She is a third-year transfer student in the BFA Musical Theatre program at UCF. Past credits include *9 to 5: The Musical* (New Employee), *Sweeney Todd* (Ensemble), *The Secret Garden* (Mary Lennox) and *Hairspray* (Penny Lou Pingleton). @allyduffy



Nate Elliott (Lumière, U/S Gaston) is so grateful to be back at the Athens, performing in one of his absolute favorite musicals! Some favorite past roles include Eugene (*Brighton Beach Memoirs*), Don Lockwood (*Singin' in the Rain*), Fred Casely (*Chicago*), Ted Hanover (*Holiday Inn*), Emcee (*Cabaret*), and Phil Davis (*White Christmas*). When he's not onstage, he can be found entertaining over at Walt Disney World and Universal Orlando Resort. He would like to thank the creative team, the crew, the cast, and his family and friends for their continuous love and support! And most of all, he'd like to thank God for His never-ending blessings in his life. Finally—stay safe, God bless, may the Force be with you, enjoy the show, and have a magical day!

Great Books Make Great Theater!

INDEPENDENT BOOKSTORE • NEW, USED & COLLECTIBLE BOOKS



1301 N. Woodland Blvd • DeLand, FL 32720 • 386-736-6501

Open Mon-Sat 9:30am-5:30pm • Email: familybookseller@yahoo.com • www.familybookshopdeland.com

Meet The Cast



Logan Freeman (Ensemble) (he/him) is excited to return to the Athens Theatre after his first year at UWF studying Musical Theatre. Logan has appeared in multiple shows over the years at the Athens, including *Seussical* (Horton), *Young Frankenstein* (Ensemble) and *Escape to Margaritaville!* (Ensemble).



Christian Gonzales (Ensemble, U/S Beast) is from Ocala, where he has played numerous roles at the Ocala Civic Theatre, such as Beast in *Beauty and the Beast*, Jack Kelly in *Newsies*, Tobias in *Sweeney Todd*, Tully in *Escape to Margaritaville*, and many more. He works as a front-of-house section leader at Chick-fil-A Ocala and plans to pursue a career in theatre and acting. Special thanks go to Mom, Dad, Justin, Poppy, Autumn, and the Carr family. Christian adds: "It's a joy to perform in one of my favorite shows in such a rich ensemble and to once more understudy the very first lead I ever played! *Beauty and the Beast* truly is Disney magic every time you get to see it, and I'm glad to be a part of it."

Specialty Drinks at the Concession Stand



(Adult)

Kir Royale \$7

This delightful blend of crème de cassis, a French blackcurrant liqueur and prosecco is the perfect way to add a little sparkle to your evening.



Chip's Sips \$5

A fun and whimsical kiddie cocktail. It features lemon-lime soda, pineapple nectar, a splash of grenadine, and a touch of edible magic for an enchanting twist.

Meet The Cast



Becca Griffin (Ensemble, u/s Madame de la Grande Bouche) is so excited to be returning to the Athens stage for a second time. Last seen as Vibrata in *A Funny Thing Happened on the Way to the Forum*, she was also seen as Susan in *The Full Monty* at Theatre West End, Widow Corney in *Oliver!* at Osceola Arts, and she was in the ensemble of *Young Frankenstein* at Osceola Arts. Becca would like to thank the production team for giving her this opportunity, and her boyfriend Andres and cats Lando and Sam for their love and support.



D'Montrae Harris (Ensemble, u/s Lumière) is a recent graduate of DeLand High School and an upcoming freshman at Florida Southern College, studying his BFA in Musical Theatre and Dance. Recent extracurriculars include serving as Captain of his former dance team, Vice President of his high school's choir program, as well as a choreographer of his school's theatre program, whilst pursuing choreographic endeavors around Central Florida. You may remember D'Montrae from his recent portrayal of Angel in last season's *RENT*, but other recent credits include Choreographer/Costard in *Love's Labour's Lost* (Orlando Shakes), Harlem Ensemble in *Ragtime*, and Michael Hobbs in *Elf*. D'Montrae would like to thank his creative teachers, family, and coaches for the endless amounts of support. Insta: @dmontraeharris

SATURDAY K-2 MUSIC & DRAMA WORKSHOPS

DESPICABLE YOU



SEPTEMBER 14TH

HALLOWEEN BOO BASH



OCTOBER 12TH



NOVEMBER 9TH



DECEMBER 7TH



For more information or to sign up:
www.athensdeland.com/youth-theater/
Email: Education@athensdeland.com • Phone: 386-736-1500 Opt. 3



TURN-KEY DESIGN, LLC



Josh & Cassandra Poertner are proud to support the Athens Theatre!



the **PARTY** EXCHANGE

YOUR ONE STOP PARTY SHOP!

**YOUR COMPLETE SOURCE
FOR DECORATIONS,
PLANNING SERVICES,
RENTALS, AND COSTUMES!**



**2436 S. VOLUSIA AVE.
ORANGE CITY
(386) 774-8477**

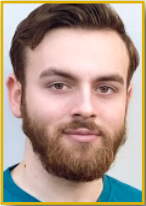


Meet The Cast



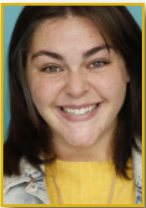
Gracie Holland (Ensemble) is so excited to be back on the Athens stage! She just finished up her freshman year at Florida Southern College, where she is pursuing her BFA in Musical Theatre. Some of her past credits include: *The Shape of Things* (Jenny), *Urinetown* (Niblets), *The Bakers Wife* (Genevieve), and *Matilda, Jr.* (Miss Honey). She would like to thank all her MT professors, high school teachers, family and friends for their constant love, guidance, and encouragement. She would also like to thank the wonderful BATB team for this amazing opportunity to

create another beautiful story on the Athens stage. She hopes you enjoy this wonderful show! Insta: @graciehollandd



Joshua Houvouras (The Beast) is incredibly excited to be returning to the Athens stage where he previously appeared in *Young Frankenstein* (The Monster) and *Noises Off* (Frederick Fellows). He is a graduate of the University of Central Florida's BFA Musical Theatre program where he also minored in Sociology. Select previous Theatre UCF credits include *Welcome to the Moon* (Cowboy) and *Fabulation* (Accountant). Some other favorite credits include *Black Flag* (Harry) at Mad Cow Theatre, and *Forbidden Frontier: Adventure*

Island (Wyatt "Digger" Dempsey) at Cedar Point.



SarahRae Jackson (Madame De La Grande Bouche) is thrilled be returning to the stage after a ten-year hiatus. SarahRae has a background in Opera and Theatre, and she currently sits on the board for the New York Chamber Choirs. Her previous credits include Pennywise in *Urinetown*, Rona in *The 25th County ... Spelling Bee*, Joy in *Cinderella*, Ethel Toffelmeyer in *The Music Man*, the Witch in *Into the Woods*, and Mrs. Peachum in *The Three Penny Opera*. She would like to thank her beautiful wife for her unending support.



Krystal Kennedy (Ensemble, U/S Belle) is excited to be doing her first show here on the Athens stage! Favorite past credits include Annette in *Cruel Intentions: The 90s Musical*, Jenny in *The Shape of Things*, and Franca in the world premiere of *Belladonna: The Musical* (a role she originated). Most days she can be found at Universal Orlando singing with some frogs in Hogsmeade or telling tales in Diagon Alley. Enjoy the show!

A promotional poster for a Bob Seger tribute concert. On the left, a black and white photo of Bob Seger with long hair and a beard, singing into a microphone. In the center, a red heart graphic with a white outline, containing the text "BEAUTIFUL LOSER" in white. Above the heart is a white arrow pointing right, and below it is a white arrow pointing left. To the right of the heart, the text "BOB SEGER TRIBUTE" is written in white, bold, sans-serif font. In the bottom left corner, the text "JULY 24TH 4PM & 8PM" is written in red, bold, sans-serif font. In the bottom right corner, there is a red logo for "CONCERT SERIES" featuring a stylized sunburst or fan shape.

WEST VOLUSIA'S HOMETOWN NEWSPAPERS
COVERING NEWS BIG AND SMALL THROUGHOUT DELAND,
DELTONA, ORANGE CITY, DEBARY & ALL AROUND THE REGION.



The West Volusia **Beacon** BEACON EXTRA! NEWSPAPERS

PROUD TO SUPPORT THE ARTS IN WEST VOLUSIA

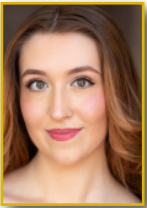


110 W. NEW YORK AVE. DELAND, FL 32720
386-734-4622 • BEACONONLINENEWS.COM
EMAIL: INFO@BEACONONLINENEWS.COM

Meet The Cast



Kelsey Kline (Ensemble, Dance and Fight Captain) (she/her) is thrilled to be making her Athens Theatre debut! A graduate of Rollins College Theatre Department, Kelsey recently returned from TheaterWorksUSA's national tour of *The Magic School Bus: Lost in the Solar System* where she played Janet Perlstein. Other recent credits include Quack in *Make Way for Ducklings* (Orlando Family Stage), Ms. Mistle in *The Grinchmas Who-liday Spectacular!* (Universal Orlando), and Barry Cuda in *Piratefest* (LegoLand Resort). When not performing you can find Kelsey teaching the next generation of artists at Orlando Family Stage, Dr. Phillips Performing Arts Center and Mainstages. Kelsey would like to shout out her dearest friends and family, thank you for the sunshine you add to the world. @kelseyjcline



Amy Lacey (Babette) is excited to make her Athens Theatre debut! She holds a BFA in Musical Theatre from the University of Central Florida. Favorite credits include Alice Murphy in *Bright Star*, Johanna in *Sweeney Todd* (Theatre UCF), Katherine in *Newsies*, and Julia Peel in *McBride's Call* (Inspiring Arts Productions). www.amy-lacey.com



Paul A. Lance (Ensemble, U/S Maurice) is excited to join the cast of *Disney's Beauty and the Beast!* A graduate from Samford University with a BFA in Musical Theatre/Dance, Paul has performed in numerous productions both regionally and locally. Most recent credits include FruitWine's production of *Golden Gals Live!* starring Ginger Minj and Encore Performing Art's production of *Hello, Dolly!* starring Jodi Benson. Other credits: *The Inheritance* (Ensemble Theatre Company), *Hairspray* (Theatre Winter Haven), *Urinetown* (Theatre South Playhouse), *The Prom* (Theatre South Playhouse), *The Hunchback of Notre Dame* (Little Radical Theatrics), *Young Frankenstein* (Athens Theatre), as well as in the World Premiere of *Serve for the Gawds* at the 2023 Orlando Fringe Festival. Paul has a lot of supporters in his life that he would like to thank, including William Hobby (husband) and Bobby & Cindy Lance (parents). Instagram/TikTok: Paul.A.Lance





IMPROV YOURSELF!

DELAND AREA 
CHAMBER
of Commerce
& ORANGE CITY ALLIANCE

JOIN THE CHAMBER FOR NETWORKING
OPPORTUNITIES TO IMPROVE YOUR CONNECTIONS
WITHIN OUR WEST VOLUSIA COMMUNITY

FOR MORE INFORMATION,
PLEASE EMAIL US AT
CONNECT@DELANDCHAMBER.ORG
OR CALL 386.734.4331 X1

Meet The Cast



Manny Lantigua (Monsieur D'Arque, Ensemble) is excited to be in his first production with the Athens Theatre! Manny's theatre credits include Audrey 2 in *Little Shop of Horrors*, Johnny in *Curtains the Musical*, Roscoe Dexter in *Singin in the Rain*, Matthew's/Ensemble in *How to Succeed in Business without Really Trying*, Nibbles/Ensemble in *West Side Story*, Hipster Guy/Ensemble in *Thoughts About You an Original Musical*, and he also is a performer at Universal Studios Orlando Resort.



Mark Leavitt (Ensemble, U/S Lefou) is so excited to be back on the Athens stage! Mark was last seen at the Athens last summer in the ensemble of *Escape to Margaritaville*. Other credits include Mingo in *Crazy for You*, Mr. Martin in *The Bald Soprano*, John Hinckley in *Assassins*, and Male Swing in *Rock of Ages*. Mark has just finished his second year at Nazareth University in Rochester, New York for his BFA in Musical Theatre. Mark would like to thank all his friends and family for their constant love and support and hopes you all enjoy the show!



Scott Leavitt (Ensemble) is excited to be returning to the Athens stage after last appearing in *Escape to Margaritaville*! Past credits include Billy Flynn (*Chicago*), Julian Marsh (*42nd Street*), Demetrius (*A Midsummer Night's Dream*), Gilmer (*To Kill a Mockingbird*) and Jim O'Connor (*The Glass Menagerie*). He has also performed at Universal Studios in Halloween Horror Nights and in Mardi Gras. He holds a BFA in Acting from Lynn University. He'd like to thank the cast and crew for their tremendous hard work and talent, and his family and friends for

their constant support. Please "be our guest" and enjoy the show!



Samantha Lewis (Les Filles #3) is a sophomore in the BFA Musical Theatre Program at The University of Central Florida. She has been seen on the Theatre UCF stage in Brightstar (U/S Margo, Ensemble) and *Sweeney Todd: The Demon Barber of Fleet Street* (Ensemble). Other credits include *25th Annual Putnam County Spelling Bee* (Olive Ostrovsky).

A Tribute to
Tony Bennett
Starring Steve Leads
August 9th

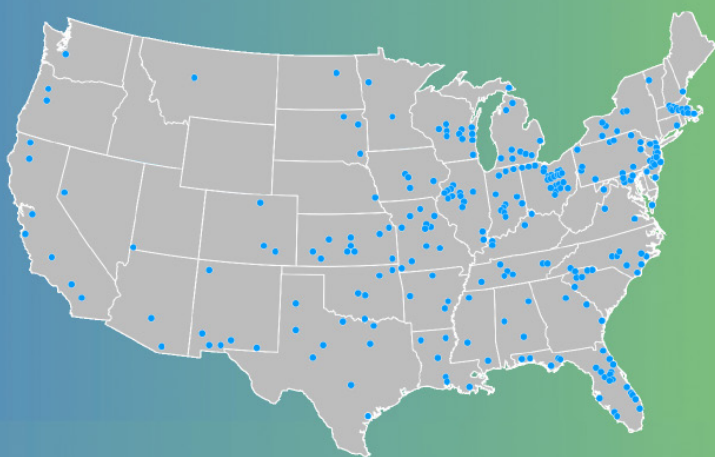
CONCERT SERIES

A promotional banner for a concert. On the left is a photograph of Steve Leads, a man with grey hair, wearing a suit and tie, singing into a microphone. To the right of the photo is the text "A Tribute to Tony Bennett" in a large, white, serif font. Below that is "Starring Steve Leads" in a smaller, white, cursive font. At the bottom left is "August 9th" in a white, serif font. At the bottom right is a logo for "CONCERT SERIES" featuring a stylized fan or shell shape above the words "CONCERT SERIES" in a bold, sans-serif font.

Connect

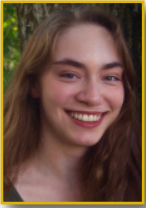
**We make connections
across our community.**

We connect the community to local news and information. We also connect your business to more customers. And we can connect your brand story to a premium, engaged audience like no one else.



LOCALiQ | Daytona Beach

Meet The Cast



Collette C. Martin (Ensemble) is thrilled to return to the Athens stage! She was last seen as Megan Jones in *Puffs the Play* (The Shoestring Theatre), Ensemble in *How to Succeed in Business...* (The Shoestring Theatre), and as Sergei/Ensemble in *Matilda, Jr.* (Athens Theatre). You might have also spotted her around the Athens Theatre Youth Academy (ATYA) this past year as their teaching assistant. In 2022, she was awarded a full scholarship as a Jack and Martha Apgar Young Music Scholar in Voice with Stetson University's Community School of Music for the 22-23 school year. Collette has been involved in theatre and the performing arts for over 10 years and is happy to be working with such a wonderful cast, crew, and creative team on one of her favorites. She thanks her family, friends, and mentors for their support. Enjoy the show!



Zoey Natal (Chip) is delighted to perform her second show on the Athens stage. Most recently you may have seen her in *Trial of the Wicked Witch* (Red Riding Hood), *The Rockin' Science Show* (James Watson/Emma Darwin/Student), *Frozen, Jr.* (Young Anna/Ensemble), *A Christmas Chaos* (Mary Cratchit), and *Mary Poppins* (Annie/Toy/Ensemble). Zoey has also been involved with the Athens Theater Youth Academy (ATYA) for the past three years. Lastly, she would like to thank her family and friends for always supporting her. Enjoy the show!

Mara Law, P.A.

Protecting you,
your family,
and your
assets

Advocate For You And Your Loved Ones

We will help you cope with legal matters that concern you the most.

*We practice
in two main areas:*

Family Law - divorce, paternity,
dependency, and adoptions.

We handle both contested and
uncontested cases as well
as post-divorce and post-paternity cases.

Elder Law - estate planning,
guardianship, probate,
Medicaid Long Term Case planning



Wendy A. Mara, JD, MBA, CAP, Mara Law, P.A.
555 West Granada Blvd., Suite D-10 • Ormond Beach, FL 32174
119 Magnolia Avenue • Daytona Beach, FL 32114
228-C East New York Ave. • DeLand, FL 32724
Tel: 386-672-8081 • Fax: 386-265-5995 • www.maralawpa.com



I enjoy Senior Living without retiring.

*-Captain Wendell Phillips,
Scenic Tour Guide and Alliance Community Resident*

Be Part of *Our History*

Celebrating 70 Years!

Alliance Community opened in 1954 in the heart of DeLand on a 10-acre tract of land. Today, we are a thriving 25-acre active senior living community that has impacted generations of families.

DID YOU KNOW?

- You only have to be 60
- Single family homes, villas and apartments are available
 - Snowbirds are welcome
 - Retirement is not a requirement
- Affordable Life Plan program available with activities designed for you
- You keep your Independence

Scan the QR code or call to schedule a personal tour and stay for lunch on us.



**Alliance
Community**



644 S. Woodland Blvd., DeLand, FL 32720 | AllianceCommunity.org
1-800-334-4133 Sales & Marketing Direct Line: 1-386-736-1814

Meet The Cast



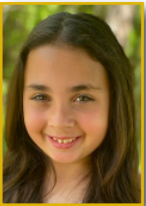
Ainsley Newton (Lefou) is delighted to perform at the Athens Theatre. Ainsley currently studies at Florida International University as a B.M. Musical Theatre Major and Dance Minor, and has also performed at numerous venues like Disney, Universal, and Steinmetz Hall. Some of Ainsley's onstage credits include Rizzo in *Grease*, Vivienne Kensington in *Legally Blonde*, Nostradamus in *Something Rotten*, and was recently seen as Grover Underwood/Mr. D in *The Lightning Thief at FIU*. Ainsley would like to thank fellow friends, family, and mentors for their support, and making her professional debut a memorable experience. Instagram: @ainsleynewton27



Mason Sadlier (Ensemble) is a BFA acting major at Point Park University. This is his first time performing at the Athens Theatre, and he is thrilled to be a part of this production. Mason has recently worked on *Silent Sky* as Peter, *Romeo and Juliet* as Paris, and *A New Brain* as Mr. Bungee. He would like to thank his friends and family for always challenging and pushing him artistically and as a person. Instagram @sadlier_mason



Danny Sanchez (Cogsworth) (he/him) is an Orlando based actor and works in Social Media Marketing. He is so excited to return to the Athens with this production! His previous credits include Marcus Lycus in *The Funny Thing Happened on the Way to the Forum* (Athens Theatre) Male Swing in the *25th Annual...Spelling Bee* (Theater West End), Teddy/Ensemble in *The Full Monty* (Theater West End), Sheldon in *The Prom* (Theater West End & Titusville Playhouse), Bard #3 in *We Begin In A Tavern* (Orlando Fringe 2023), and William Barfee in the *25th Annual...Spelling Bee* (Athens Theatre). Education: UCF BA Theatre Studies and Double Minor(s) in Journalism and Creative Writing. He hopes you enjoy the show!



Adella Sita (Chip) is ecstatic to be making her debut appearance on the Athens stage! Adella will be entering 4th grade this fall, and just completed her first role ever as Squirt in *Finding Nemo, Jr*. Adella is so excited to have the opportunity to share the stage with her dad, and they cannot wait to share this experience together! She wants to thank her whole family for coming out to support her, especially her beautiful mommy and best little sister, Winnie, for supporting her through this whole experience.



Meet The Cast



Joey Sita (Ensemble, Cogsworth U/S) is happy to be back on stage at the Athens Theatre, where he belongs. It has been 5 years since his last performance in *Singin in the Rain* as Rod. Joey has also recently played Joey in *Sister Act: the Musical*. Joey has also appeared in *Les Miserables*, *Legally Blonde*, *White Christmas*, and *Oklahoma* at the Athens and he is extremely happy to be back at home on the Athens Theatre stage. He is excited to share the stage once again with his beautiful daughter, Adella. Joey wants to thank his amazingly beautiful

wife for always supporting and loving him, and his wonderful parents for always coming to the shows and being his biggest fans. Joey has two beautiful daughters, Adella and Winnie. Joey is also the music teacher at Sweetwater Elementary, and thanks his faculty family for coming out to support him. Joey especially thanks God, always, for his talents and His blessings. He also wants to give a shout out to his students and thank them for inspiring him to keep pursuing his dreams daily.



Gabriella Smith (Ensemble) is excited to return to the Athens Theatre, she was recently seen as Panacea in *A Funny Thing Happened on the Way to the Forum*, Mrs. Snoringman in *White Christmas*, and Ensemble in *RENT*. She is studying theater at the University of Central Florida. Previous credits include *As You Like It* (musician, Phoebe U/S, Denis U/S), *Mary Poppins* (Dance Captain/Ensemble), and *Romeo and Juliet* (Lord Capulet). She would like to thank the entire creative team for this fabulous opportunity!

**BEST OF
ROD**
Rod Stewart
TRIBUTE

August 23rd

CONCERT SERIES



VTS

Reliant Title Group, Inc. d/b/a

Volusia Title Services

WHETHER YOU ARE BUYING OR SELLING A HOME, LET OUR EXPERIENCE AND EXPERTISE GUIDE YOU THROUGH THE CLOSING AND SETTLEMENT PROCESS.

Office 386.279.4828 Fax 386.279.0048

109 West Rich Avenue • DeLand, FL 32720

Relianttitlegroup.com

Serving Central Florida for over 35 Years

Meet The Cast



Emilyann Tobias (Belle) is both honored and humbled to be invited back to the Athens Theatre stage; this time to bring to life a role beloved by so many. Emilyann most recently appeared in *Irving Berlin's White Christmas* (Tessie/Betty U/S) here at the Athens. Other credits include *A Funny Thing Happened on the Way to the Forum* (Philia), *The Marvelous Wonderettes* (Cindy Lou), and *Mary Poppins* (Mary Poppins), all at The Little Theatre in New Smyrna Beach. Emilyann received her BFA in Theatre Performance: Acting, from the University of Florida in Gainesville. She would like to express her thanks to the Athens Theatre Creative Team for this dream opportunity, as well as extend her gratitude and love to her family for their unwavering support and encouragement of her creative endeavors.



Nikolas Alexander Wendorf (Gaston) is excited to make his debut at Athens Theater! Having recently moved from Jacksonville, Nik has kept himself busy by performing throughout the Orlando theme parks, including Walt Disney World and Universal. Previous regional credits include Frank-N-Furter in *The Rocky Horror Show* at The Paul Bunyan Playhouse and Ethan Girard in *The Full Monty* at Theater West End. During his time at Jacksonville University, Nik could be seen as John Jasper/Clive Paget in *The Mystery of Edwin Drood* and Eros in *Metamorphoses*. He wants to thank you for reading his bio (There's no pictures!) and for coming to the show!

Special Thanks!

Mike Kitaif

Publicity and Production Photos

The Studio Creative Group

Video Promo

Daisy McCarthy Tucker

Publicity Shoot Costumes

Pat & Toni's Sweet Things

Numerous Delectable Treats found at the Concession Stand

3 Smart Cookies

Belle's Enchanted Experience Goodie Bag Treats

Joyce Darch and The Party Exchange

Opening Night Greeter Costumes and so much more!



**Both acting and internet
marketing require a blend of
creativity and strategy.
An actor brings a character to
life in front of an audience;
PaperBoat helps businesses
find their audience.**

**Let me help your business get
a standing ovation.**

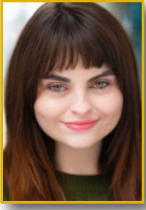
www.PaperBoatMedia.com

Robert Urban

407-227-0741



Meet The Cast



Natalie Werba (Ensemble) is a rising senior in the BFA Musical Theatre Program at the University of Central Florida. Natalie has performed in a variety of musicals and plays including *Jimmy Buffet's Escape to Margaritaville* (Alex Jaffe, Ginger, Angela) at the Athens Theatre as well as *Sweeney Todd: The Demon Barber of Fleet Street* (Ensemble), *Working* (Woman #2 and U/S Rose Hoffman) and *Welcome To The Moon* (Betsy) at the University of Central Florida. She has also performed at the Applause Awards as a medley lead, outstanding performer, and alumni performer.



Christie Young (Mrs. Potts) is thrilled to spend another summer at the Athens Theatre! For the Athens, she's played Poppy in *Noises Off*, Frau Blucher in *Young Frankenstein*, Regina in *Rock of Ages*, Woman 1 in *I Love You, You're Perfect, Now Change*, and Domina in *Forum*. She's performed in theatres from Alaska to New Hampshire, and most recently opened DreamWorks Imagination Celebration as a puppeteer for Universal Orlando. Other local performances include Lady Eugenia in *A Gentleman's Guide to Love and Murder* (Osceola Arts), ensemble in *Kiss Me Kate* (Orlando Shakespeare Theatre), and Helga the Germany Storyteller in *Holidays Around the World* (Epcot). She is a full-time actor and puppeteer for Universal Orlando Resort (*Grinchmas*, *Wizarding World of Harry Potter*) and holds an MFA in Musical Theatre from the University of Central Florida. Many thanks to my family and friends for their continued support! Instagram/Facebook/TikTok: @foreverchristieyoung

CHICAGO REWIRED
— THE PREMIER CHICAGO TRIBUTE BAND —

August 24 • 7:30pm

ATHENS THEATRE
CONCERT SERIES

A promotional photo for the Chicago Rewired band. The band consists of seven members standing on a stage with colorful spotlights. The text "CHICAGO REWIRED" is at the top in large, stylized letters, with "THE PREMIER CHICAGO TRIBUTE BAND" underneath. The date and time "August 24 • 7:30pm" are on the left, and the Athens Theatre Concert Series logo is on the right.

ARTISAN
DOWNTOWN HOTEL
UPSCALE MODERN BOUTIQUE

215 S Woodland Blvd. DeLand, FL 32720

A composite advertisement for the Artisan Downtown Hotel. On the left is a logo featuring a stylized lotus flower above the text "ARTISAN DOWNTOWN HOTEL" and "UPSCALE MODERN BOUTIQUE". Below the logo is the address "215 S Woodland Blvd. DeLand, FL 32720". On the right are four smaller images: a modern building exterior at dusk, a hotel room with a bed and patterned rug, a bar with various bottles and glasses, and a close-up of a bar counter.



Disney **BEAUTY**
AND THE **BEAST**

~ CAST ~

Emilyann Tobias.....	Belle
Joshua Houvouras.....	The Beast
Nikolas Alexander Wendorf.....	Gaston
Nate Elliott.....	Lumière, U/S Gaston
Danny Sanchez.....	Cogsworth
Christie Young.....	Mrs. Potts
Adella Sita.....	Chip
Zoey Natal.....	Chip
Brian Allan Chambers.....	Maurice
Amy Lacey.....	Babette
SarahRae Jackson.....	Madame De La Grande Bouche
Ainsley Newton.....	Lefou
Ally Duffy.....	Ensemble, U/S Les Filles De La Ville
Collette C. Martin.....	Ensemble
Gabriella Smith.....	Ensemble
Gracie Holland.....	Ensemble
Kelsey Kline.....	Ensemble, Dance and Fight Captain
Krystal Kennedy.....	Ensemble, U/S Belle
Lauren Bowrosen.....	Les Filles #1, U/S Babette
Natalie Werba.....	Ensemble
Becca Griffin.....	Ensemble, U/S Madame de la Grande Bouche
Savanna Dacosta.....	Les Filles #2, U/S Mrs. Potts
Samantha Lewis.....	Les Filles #3
Christian Gonzales.....	Ensemble, U/S Beast
D'Montrae Harris.....	Ensemble, U/S Lumière
Manny Lantigua.....	Monsieur D'Arque, Ensemble
Joey Sita.....	Ensemble, U/S Cogsworth
Logan Freeman.....	Ensemble
Mark Leavitt.....	Ensemble, U/S Lefou
Mason Sadlier.....	Ensemble
Paul A. Lanc.....	Ensemble, U/S Maurice
Scott Leavit.....	Ensemble

~ ACT I ~

Overture/Prologue
Belle
No Matter What
Maurice Travels/Wolf Chase
Me
Belle (Reprise)
Home
Gaston
Gaston (Reprise)
How Long Must This Go On
Be Our Guest
If I Can't Love Her

~ ACT II ~

Entr'acte/Wolf Chase
Something There
Human Again
Beauty And The Beast
If I Can't Love Her (Reprise)
A Change In Me
Show Me the Beast
The Mob Song
Home (Reprise)
Transformation/Finale
Bows

~ PRODUCTION TEAM & TECHNICAL CREW ~

Director and Choreographer.....Mayme Paul
Music Director.....Chris Endsley
Assistant Choreographer..... Lauren Stromak
Producing Artistic DirectorFrank Ramirez
Scenic DesignerMichael Brewer
Prop Designer/Scenic Builder/TD..... Tori Oakes
Costume Designer.....Maine State Music Theatre Costumes
with additional costumes by Tamara Marke-Lares
Lighting Designer/ATD..... Nicholas Hogan
Sound Designer..... Lamar Hickley
Scenic Charge Artist.....Bonnie Sprung
Scenic Build CrewJonathan Jackson, Ethan Roth
Production Supervisor/PSM..... Diane McLean
Assistant Stage Manager/Deck Manager..... Avery Tyler
Apprentice Assistant Stage Manager..... Cadence Mimms
Sound Manager..... Dylaney Sabino
Rehearsal ASM & Costume AssistantAmanda Tyler
Fly ManagerBraeden Hunt
Costume & Prop Shop Manager Amy Uppercue
Run CrewMegan Quiroga, Garin Collier, Molly Asmussen
Lightboard OperatorMadison Thompson
Spotlight OperatorsBrayden Volkman, Hannah Uppercue
ASL/English Interpreting.....Dory Radebaugh, Nicole Caballer
Professional Audio Describer Chad Lewis



Special Audio
Described Performance
on Sunday, July 28



Special ASL/English
Interpreted Performance
on Friday, July 26

NightBird SWFL



The Ultimate Tribute to Stevie Nicks
August 25th • 4pm

ADESSO

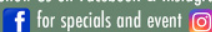
DRYWALL SERVICES

& Son



ADESSOANDSONDRYWALL@HOTMAIL.COM • OFFICE: 386.878.5854

Globally Inspired cuisine featuring fresh local seafood, prime steaks, and more!
Follow us on Facebook & Instagram



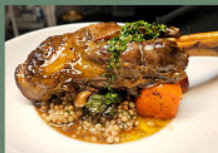
for specials and event

ress

RESTAURANT

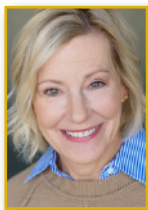
Seating reservations and walk-ins
Open for Lunch: Tues-Sat 11am to 3pm
Open for Dinner: Tues-Sat 5pm to 9pm

103 W. Indiana Ave, DeLand, FL 32720 ♦ 386-734-3740 ♦ cressrestaurant.com



Ask for our Athens Theatre Pre-show 3-course Prix Fixe Menu
(please allow 1.25hrs+ for dining)

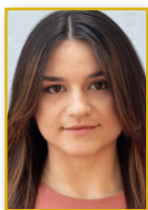
Meet The Creative Team



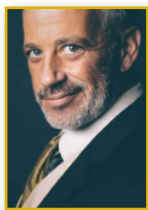
Mayme Paul (Director/Choreographer) is thrilled to be back with the Athens family. Previous shows here include *White Christmas*, *The Hunchback of Notre Dame*, *Young Frankenstein*, *I Love You-You're Perfect-Now Change*, *Chicago*, *Singin' in the Rain*, *Into the Woods*, *The Fantasticks*, and *Gypsy*. Other recent shows include *9 to 5*, *A Chorus Line*, and *Cabaret* at Theatre West End, and *Shrek* at Dr. Phillips. As an actor, Mayme performed on Broadway in *A Chorus Line*, *Little Johnny Jones*, *The Tap Dance Kid*, and the TONY Awards. When not directing in town, she is off sailing as an Install Director for Virgin Voyages cruise lines. She would like to thank her husband for his endless support!



Chris Endsley (Music Director) is a veteran professional Music Director having served as Music Director/Accompanist for Garden Theatre, UCF Conservatory Theatre, Rollins College, Athens Theatre, Theatre Winter Haven, Osceola Arts, Orlando Family Stage, Daytona State College, Granbury Opera House (Texas), and Seaside Music Theatre. Chris is currently Music Director for Virgin Voyages cruise line and Organist/Director of Traditional Worship at North Lake Presbyterian Church, Lady Lake. He has toured the country as a concert organist and conducted workshops in church music development. Chris taught Choral Music, Musical Theatre and AP Music Theory for Volusia County Schools for 25 years. He holds a Bachelor of Music in Church Music/Organ from Baylor University, a Master of Music in Organ Performance from Florida State University and two additional years of graduate study in performance from Texas Christian University. Chris is a proud member of AFM Local 389. Much love to A.M.E.N.!



Lauren Stromak (Assistant Choreographer) is a choreographer, educator, and performer originally from South Florida with a degree in Musical Theatre from the University of Central Florida. Her artistic journey has taken her to various stages in Florida, from Stuart to Tampa and throughout Central Florida. Lauren is thrilled to serve as Assistant Choreographer under Mayme Paul for *Beauty and The Beast*. Her association with Athens Theatre began in 2021 when she joined the cast of *ELF, the Musical*, and has been a teaching artist of the Youth Academy since the fall of 2021. Her past choreography credits include *Legally Blonde* and *Footloose: Youth Edition*, and she served as Assistant Choreographer for *Frozen, Jr.* and *White Christmas* last season. Lauren thanks her family and boyfriend for their unwavering support. Enjoy the show and remember true beauty comes from within!



Bill Warriner (Fight Choreographer) Professional Fight Director since 1991. He's done some stuff.

Where good friends and good wine meet.



the
**Elusive
Grape**

129 N. Woodland Blvd. • Downtown DeLand
386-785-2467 • www.elusivegrape.com

Serving as DeLand's Living Room Since 2003



A proud sponsor of the Athens Theatre's Box Suite Packages.

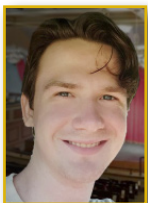
Meet The Production Team



Michael S. Brewer (Scenic Design) is a 1987 graduate of Wright State University in theatre design and technology. He started working as a scenic artist in regional theaters, the Alliance Theatre in Atlanta, La Jolla Playhouse, Cincinnati Playhouse, and Cleveland Playhouse. He is currently based in Ohio and has been designing for local theaters there. At the Athens, he has designed *Guys and Dolls*, *A Christmas Story*, *Clue*, *Elf*, *I love you*, *You're Perfect*, *Now Change*, and *Ragtime*. He is looking forward to starting out this season with *Disney's Beauty and the Beast*.



Lamar Hickley (Sound Designer/Director of Sound) has always been involved with the Arts. Since the age of 8, he has acquired the skill to play multiple instruments and gained knowledge in the area of sound reinforcement. He has over 20 years of experience as a recording engineer, in live mixing, and music production. In 2012, he received his AS degree in Music Production Technology and in 2014 he received his BAS in business supervision and management. Lamar's passions in the industry of audio granted him the "Most Outstanding Student" award in 2012. As a result, he was selected as the face of the Music Production Technology at Daytona State College. In 2016, Lamar was introduced to the Athens family and is honored to have his company "Kevin Majestic Productions," responsible for ensuring all the audio needs are met with nothing but the best sound and quality!



Nicholas Hogan (Lighting Director/ATD) is excited to be working with the Athens as Director of Lighting/Assistant Technical Director. Nick found his passion for lighting in early high school, practicing design at the historical Barn Theatre in Stuart, Florida. After high school, Nick went on to find employment in various lighting positions in places such as the Maltz Jupiter Theatre, the Lyric Theatre, and the Orlando Repertory Theatre. Nick is responsible for the lighting design and execution of the Athens mainstage shows as well as their limited engagement performances.



ORIGINAL SINGER/SONGWRITER SERIES



PRATER DAY AND THE ATHENS THEATRE PRESENTS

BUFFALO

NICHOLS

August 29th

7:30pm



Boulevard Tire Center

Focused on Tomorrows Solutions Today



**GET
TIRE PRICES**



**SHOP FOR
AUTO REPAIRS**



**SCHEDULE
AN APPOINTMENT**



**TRY ON SOME
WHEELS**



Axle, CV Joint & Driveshaft Repair



Belts & Hoses



Brake Repair



Climate Control Systems



Cooling System Repair



Differential Repair



Electrical and Electronic Systems



Engine Diagnostics and Performance



Four Wheel Drive Systems

Car Care You Expect... Customer Service You Deserve.

386•734•6447  **BoulevardTire.com**



**BELLEVIEW • BUNNELL • DELAND • EDGEWATER • LADY LAKE
MOUNT DORA • ORANGE CITY • ORMOND BEACH • PORT ORANGE**

Meet The Production Team



Tamara Marke-Lares (Resident Costume Designer) is a sculptor, painter, printmaker, and creature marionette maker. She has been designing costumes freelance for 19 years. She has designed for Dance, Ballet, Opera and Cirque productions, as well as numerous collaborative and solo productions. Some favorite costume credits include *Margaritaville*, *Rock of Ages*; *Ragtime*, *Shrek*, *Elf*; *Clue*; *Ain't Misbehavin'*; *Jerry's Girls*; *Chicago*; *The Complete Works of William Shakespeare, Abridged*; *James and the Giant Peach*; *Guys and Dolls*; *Into the Woods*; *The Wedding Singer*; *Jekyll & Hyde*; *The Lion King, Jr.* and *The Producers*. This is her seventh season with the Athens Theatre. Tamara spends her days teaching at Ivy Hawn Charter School, creating art and costumes and being amazed by her two crazy-talented children.



Diane McLean (Production Supervisor, Stage Manager) is a professional stage manager with over 30 years experience in regional, touring, and Off Broadway theater, as well as film and higher education. She received her MFA in Stage Management from Boston University. She has stage managed for The Kennedy Center, Manhattan Theatre Club, Berkshire Theatre Festival, Huntington Theatre Company, Lyric Stage Company, Boston University College of Fine Arts, and Boston University Tanglewood Institute, to name a few. Film credits include *War of the Worlds*, directed by Steven Spielberg and Stephanie Daley starring Tilda Swinton. In addition to her work at the Athens Theatre, she is a professor and mentor to students at the Mike Curb College of Music, Entertainment, & Art at Daytona State. She is also the former Professor of Theatre at Endicott College in Beverly, MA. She'd like to thank Frank and the staff and board of the Athens Theatre for the opportunity to engage in theatre once again in her new hometown of DeLand. Love to H, C, and G.

August 30th
7:30pm

The **dirty DOERS**
a tribute

ATHENS THEATRE
CONCERT SERIES

A promotional poster for a concert. The background is a photograph of a man with long, curly hair singing into a microphone. The text is overlaid on the left side. At the top right, it says 'August 30th' and '7:30pm'. The main title is 'The dirty DOERS' where 'dirty' is in a stylized, bubbly font and 'DOERS' is in a bold, blocky font. Below that, it says 'a tribute'. At the bottom left is a logo for the Athens Theatre Concert Series, featuring a stylized fan or shell shape.

INTEGRITY



AMPLIFIED



**SYSTEM INTEGRATION
& INSTALLATION**

Design Services • Acoustic Treatment • AVL Installation
Product Training/Support • Streaming Services

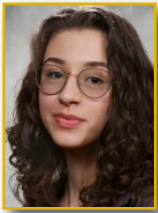


**RENTAL & EVENT
PRODUCTION**

Audio • Lighting • Video

3905 Center Loop • Suite 300 • Orlando, FL 32808
407-299-9678

Meet The Production Team



Cadence Mimms (Production Assistant) is a student at Deltona High School, while also studying for an A.A. at Daytona State College. Cadence first started doing theatre in 2018, and since then has fallen in love with it. Before moving from New Hampshire, Cadence performed in her school's production of *Stories Under the Big Top* (Ensemble) and *The Trial of Goldilocks* (Judge Farmer). She was most recently seen on the Athens Theatre stage in *Legally Blonde, Jr.* (Chutney, Ensemble), *Frozen Jr.* (Ensemble), *Footloose Youth Addition* (Ensemble) and *Singin' in the Rain, Jr.* (Ensemble). Cadence has also worked behind the scenes on the most recent main stage productions at the Athens Theatre including *The Hunchback of Notre Dame*, *Escape to Margaritaville*, *Misery*, *Irving Berlin's White Christmas*, *A Funny Thing Happened on the way to the Forum* and *Rent*. Cadence is excited about this new opportunity with the Athens Theatre and hopes you enjoy the show!



Tori Oakes (Prop Designer, TD, Scenic Build) is a Central Florida based technical director and scenic designer. She is, as always, happy to be working at the Athens Theatre. Previous designs at the Athens include *Erving Berlin's White Christmas*, *Misery*, *Margaritaville*, *Rock of Ages*, *The 25th Annual Putnam County Spelling Bee*, *Ragtime*, *Shrek TYA Version*, *Elf*, *Chicago*, *Mamma Mia!*, *The Fantasticks!*, *9 to 5*, *Into the Woods*, *The Producers*, *Jekyll & Hyde*, *The Wedding Singer*, *Oklahoma!*, *Arsenic & Old Lace*, *Aladdin, Jr.*, *Sister Act*, *Driving Miss Daisy*, *James and the Giant Peach*, *A Christmas Carol*, *The Addams Family*, *Cabaret*, and *White Christmas*. Tori is the owner of Misfit Toys Theatrical LLC, an Orlando based production company that, in addition to building scenery for Athens Theatre productions, provides various scenic and properties services for a number of theatrical organizations from Central Florida to New England. Tori holds an MFA in theatre from the University of Central Florida.



Dylaney Sabino (Manager of Sound) is absolutely thrilled to be working on *Beauty and the Beast* as the start of her new season at The Athens! This will be Dylaney's third season with The Athens, where she's sound operated shows such as *RENT*, *A Funny Thing Happened on the Way to the Forum*, *White Christmas*, *Misery*, *Noises Off*, and more! She is grateful to be representing Kevin Majestic Productions in her full-time role, and hopes you enjoy the show!

The Athens Theatre is always seeking

Volunteers

Ushers • Tech Crew • Misc.

Ages 16+

Email: Marketing@AthensDeLand.com



WWW.JOEHEARNEVENTS.COM

-AWARD WINNING PLANNERS-

BEST EVENT PLANNERS- NEWS JOURNAL

BRIDES CHOICE AWARD -WEDDING WIRE



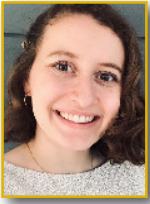
“YOU ONLY HAVE ONE CHANCE
TO MAKE THE DAY PERFECT.”



A PROUD SPONSOR OF THE ATHENS THEATRE

-JOE HEARN

Meet The Production Team



Avery Tyler (Assistant Stage Manager) is excited to be part of the *Beauty & the Beast* team! Athens stage management credits include: *A Funny Thing Happened on the Way to the Forum*, *Misery* and *The Hunchback of Notre Dame*. Some favorite shows she has been the ASM for include *White Christmas*, *Noises Off*, *Young Frankenstein*, and *Rock of Ages*. She also stage manages and teaches technical theater with the Athens Theater Youth Academy. Outside of the Athens, Avery teaches English and assists with theater and dance at Deltona High School. She would like to thank the cast, crew, and production team for all their hard work as well as thank the audience for supporting the arts in their community.



Amy Uppercue (Costume Shop Manager, Production Associate) has been working behind the scenes at the Athens Theatre since 2011 and has loved being a part of all the magic that has been created on our stage. Favorite costume design credits include *Footloose: Youth Edition*, *The 25th Annual Putnam County Spelling Bee*, *A Year with Frog and Toad*, *Legally Blonde: the Musical*, and *Footloose*. In addition to running the Athens Costume Shop, Amy is also a teaching artist for the Athens Theatre Youth Academy, and serves on the board of the National League of Junior Cotillion West Volusia Chapter and the DeLand Choir Parents Association. So much love to C, HK, AB and B.



- 3 Story Vintage Mall
- Over 42 Dealers
- Everything from Furniture to Collectibles
- Mary Ellen Walker, Owner



114 S. Woodland Blvd.
DeLand, FL 32720
386-747-4061
Hours Open:
Sunday-Monday 12-4
Tuesday-Friday 11-5
Saturday 10-6

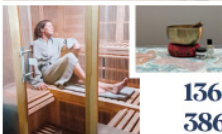
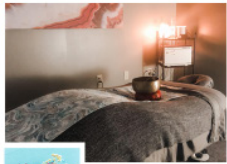
Grandma had it, Mom got rid of it, You want it back.
Come see if we've got it.



SPA • YOGA • WELLNESS



BODHI + SOL



136 S. Woodland Blvd. • DeLand, FL 32720
386-507-2310 • deland@bodhiandsol.com



The Parched Oak



RESTAURANT + BAR

145 N. Woodland Blvd.
DeLand, FL 32720
386-873-4976
theparchedoak.com



Delivering quality in our meals and cocktails, in an environment to keep you coming back.

Olive Oil & Balsamic
Vinegar Tasting Store



Open Mon-Fri | 11am-6pm
Sat | 10am-5pm



The Anointed Olive
LLC

118 N. WOODLAND BLVD, DELAND • 386-873-8123 • THEANOINTEDELIVE.COM

Meet The Administrative Team



Alexa Baldwin (Executive Director) is a graduate of Kent State University with her BFA in Musical Theatre. After twelve years of working in the theatre industry and managing the offices of several companies, Alexa became the Director of Marketing and Operations for the Sands Theatre Center (DBA - Athens Theatre) in July of 2011. In 2021, she was made the theatre's Executive Director. She has dedicated her life to working with an incredible family of co-workers and volunteers to make the

Athens Theatre a representation of what community theatres can strive to be—both onstage and off. In addition to her theatre family, she is fortunate to have an incredible husband and daughter who are endlessly patient and supportive with all thing Athens Theatre. Mrs. Baldwin thanks everyone in the cast, crew, production team, and ALL the staff for the tireless hours they spent making tonight's magic happen. She hopes that you enjoy the show and come back to visit us again soon.



Frank Ramirez (Producing Artistic Director) Frank Ramirez is a dedicated entertainment professional with over twenty-plus years of experience. His journey in the arts has taken him behind the scenes, on stage, in union management, production management, stage management, general arts management, production director, and creative guidance on multiple levels in the arts industry. He joined the Athens Theatre in 2018, has directed numerous productions on the

Athens stage, and is thrilled to be the Producing Artistic Director for this beautiful jewel of a theatre in the heart of Downtown DeLand. In the past, Frank has been part of multiple productions and organizations on Broadway, Off-Broadway, professional regional theatres, event management, and theme park entertainment management. He has also been associated with The Jim Henson Company via Heather Henson's IBEX Puppetry, where he served as Company Manager and facilitator of their worldwide full-scale theatrical productions in Canada, China, Kazakhstan, Indonesia, and nationally across the USA. Frank also worked as a guest artist instructor of Stage Management at SUNY Potsdam/The Crane School of Music.

AEROSMITH ROCKS! tribute to Aerosmith



September 6th • 7:30pm

SERVING WEST VOLUSIA



Since 1975

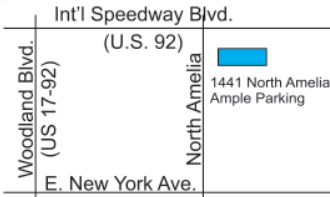
print • signs • solutions

FULL SERVICE PRINTING
SIGNS & BANNERS

386-736-1353

WHEN
QUALITY
REALLY
MATTERS

LOCATION



1441 N. AMELIA AVE. IN DELAND

HOURS:
8:30 TO 5:00
MONDAY - FRIDAY



OWNERS - STEVE & DONNA WHITE

WWW.QUALITYQUICKPRINT.COM

Meet The Administrative Team



Grace Boynton (Development Director) Grace has a background in both the performing arts and nonprofit development. After graduating from the University of Central Florida in 2020, Grace discovered her passion for nonprofit work and has since made significant contributions to organizations like Planned Parenthood and United Against Poverty, managing yearly budgets of over two million dollars and producing annual fundraising efforts. As the Development Director for the Historic Athens Theatre, she gets to blend her artistic insights with strategic fundraising expertise to support the theater's mission and ensure its continued success in the community. You may recognize Grace as a performer at the Athens Theatre in shows like *RENT*, *9 to 5* and *The Wedding Singer*.



Amanda Tyler (House Manager) A native Floridian, Ms. Tyler studied film and theatre production at Valencia College. She began working in theatre in 1993 at Seaside Music Theater in Daytona Beach as Wardrobe supervisor, Assistant to the Resident Costume Designer, and Costume Rentals Manager. She finds herself out from behind the curtain for the first time as the Athens House Manager. Amanda joined the Athens family in 2023 and is excited to help this incredible organization continue to grow and move forward. She takes great pride in the work she does alongside the many dedicated Athens Theatre volunteer ushers while helping to bring amazing art to this historic DeLand stage. She hopes that you enjoy the show!

Thank You To Our New Patron Sponsors!

\$15,000 - \$25,000 Star Performer Sponsors:
Clifford & Lavonne Strachman

\$10,000 - \$14,999 Leading Actor Sponsors:
Dr. Bruce & Carolyn Bigman
Kristin Bright
Lusignan Foundation

\$2,000-\$4,999 Ensemble Performer Sponsors:
Bill & Pam Brown
Pamela & Rick Rintz
Burt & Arleen Rosenberg

We Thank our Athens Theatre Staff

EXECUTIVE DIRECTOR
ALEXA A. BALDWIN

**PRODUCING
ARTISTIC DIRECTOR**
FRANK RAMIREZ

PRODUCTION SUPERVISOR
DIANE MCLEAN

**MARKETING &
COMMUNICATIONS
MANAGER**
SANTI GABINO

MARKETING ASSISTANT
BRIANA HOLLOMAN

DIRECTOR OF SOUND
LAMAR HICKLEY

DIRECTOR OF LIGHTING
NICHOLAS HOGAN

FACILITY MANAGER
ALAN WARE

ASST. FACILITY MANAGER
CJ MERRELL

HOUSE MANAGER
AMANDA TYLER
CLIFFORD STRACHMAN

ASSISTANT HOUSE MANAGER
CLIFFORD STRACHMAN

**COSTUME & PROP SHOP
MANAGER**
AMY UPPERCUE

YOUTH ACADEMY MANAGER
ANGELYN RHODE

RESIDENT GRAPHIC ARTIST
BOBE KENEMER

DEVELOPMENT DIRECTOR
GRACE BOYNTON

BOX OFFICE
JENNI SWEINHAGEN
KAY PHILLIPS
BRIANA HOLLOMAN
BARBARA BEASLEY
ASHLEY HEW

ATHENS ACCOUNTANT
PAM KEEZEL

**DIRECTOR OF
COMMUNITY RELATIONS**
CRAIG UPPERCUE

**DIVERSITY, EQUITY &
INCLUSION ADVOCATE**
SHONDA THURMAN



THE STATIONS OF
WSBB AM 1230 • AM 1490
106.9 FM
Clearly THE GREAT VOICE OF VOLUSTIA COUNTY

PLAYING THE BEST MUSIC EVER CREATED.
ARTISTS INCLUDING FRANK SINATRA, MICHAEL BUBLE, ELLA FITZGERALD,
HARRY CONNICK, JR., ROD STEWART, TONY BENNETT, AND MANY MORE.

Meet The Administrative Team



Craig Uppercue (Director of Community Relations) A Stetson University (BM/BME) & Grand Canyon University (M.Ed) alumnus, Mr. Uppercue has taught for 20 years in the public school systems of Florida, currently serving as a Fine Arts specialist in Volusia County Schools. Mr. Uppercue has been with the Athens Theatre since 2011 and had the wonderful privilege of serving as Artistic Director for 10 years. He is now honored to be playing a continued part in the life of the theatre. Craig is the Music Director of the Off-Broadway

National Tour *The Rock & The Rabbi* and performs with the show when available. Other performing opportunities include Broadway and Off-Broadway credits such as *The Witnesses Musical* (Original Cast member), *The Lion King*, *Songs for a New World*, and numerous national tours throughout the U.S. He is actively involved with many professional symphonies and maintains an active performing schedule with professional artists throughout the nation. Craig and his wonderful wife, Amy, live locally, enjoying every moment as they watch their three daughters grow up!



Santi Gabino (Director of Marketing and Communications), a native of South Florida, relocated with his husband and two crazy dogs to DeLand in the summer of 2022. With a rich background in venue and event management, Santi served as the Executive & Marketing Director of a highly successful venue in Homestead, FL, for over 11 years. During his tenure on his family's estate, he orchestrated nearly 100 weddings, attracting attention from renowned publications like *Allure Bridal* and *Modern Bride* for magazine shoots. The venue also

became a prime location for television filming, hosting esteemed networks such as Nickelodeon and Telemundo. He also spearheaded the creation of a wildly popular Farm-to-Table dinner series. Having cultivated a substantial social media following in his previous role and drawing upon his expertise, he now oversees the creation of all marketing materials, develops content for social media, writes press releases, radio scripts, and billboard copy, manages public communications, nurtures business-to-business relationships, and more. Additionally, he contributes a monthly food and lifestyle column to *The West Volusia Beacon*, titled "Central Flavors." Outside of work, Santi finds joy in cooking, painting, and succumbing to the irresistible temptation of buying things he absolutely doesn't need at any yard, garage, or estate sale that crosses his path.



Sanz & Sanz

PSYCHOLOGICAL ASSOCIATES, LLC

DRS. DON AND ANITA SANZ

Licensed Psychologists serving individuals and couples

(386) 943-9040



**A Tribute to the
55th Anniversary of Woodstock**

September 7th



3 Smart Cookies

**CUSTOM COOKIE
ARTISTS**

WE CREATE "WOW, LOOK AT THESE!" ROYAL ICING CUSTOM COOKIES



386-479-1069 • www.3smartcookies.com

A Proud Sponsor of Athens Theatre's Box Suite Packages and Promotionals!

AUI

**ADVANCED UROLOGY
INSTITUTE**

**LOOKING AT HEALTHCARE
FROM A DIFFERENT PERSPECTIVE.**

www.AdvancedUrologyInstitute.com
685 Peachwood Dr • DeLand • FL 32720 Phone: 386•736•3463

Meet The Administrative Team



Shonda L. Thurman (Diversity, Equity, and Inclusion Advocate) Born and raised in Flint, MI, Ms. Thurman holds a BFA in Musical Theatre from Roosevelt University, in Chicago, IL, and Stephens College in Columbia, MO. She also holds a theatre management certification from Tiffany Vega Management. Shonda is currently the curriculum manager for the Orlando Family Stage and current co-chair for the Juneteenth lunch and Learn Facts of Freedom. Her performance credits range from local to all over the country in national tours. In her roles as a DEIA,

performer, director, and educator she believes that everyone deserves a voice, their stories told and heard, and themselves represented in whatever arena they choose. "I am not a teacher I am an awakener." ~Robert Frost.



Roberta (Bobe) Kenemer (Resident Graphic Artist) is a graduate of Ringling College of Art & Design (formerly Ringling School of Art), majoring in Graphic Arts & Illustration. After relocating to Volusia County in 1982, Bobe worked for a small publishing company and as a Cartographer before accepting a position at Tennant Printing Company in DeLand. She gained extensive experience in the Graphics Department of various printing companies, along with numerous freelance projects, before assuming her role with the Athens Theatre in the fall of 2019. As the sole

image designer for the theatre and the Athens Theatre Youth Academy, her graphic design skills play an integral role in the theatre's visual identity. She takes immense pride in being part of the Athens Theatre family and eagerly anticipates the opportunity to contribute to the creative journey of each upcoming production and event.

In your corner & around the corner

Amanda Agnew Ins Agency Inc

Amanda Agnew, Agent

120 S Woodland Blvd, Suite B

DeLand, FL 32720

Bus: 386-960-7878

www.insurewithamanda.com



Like a good neighbor, State Farm is there.®



Get a Smile Worthy of a Standing Ovation!

DALE D. BATTEN, DMD, MAGD
Cosmetic and Comprehensive Dentistry

CROWNS • BRIDGES • IMPLANTS • FILLINGS • EXTRACTIONS
DENTURES • COSMETIC DENTISTRY • VENEERS
TEETH WHITENING • PERIODONTAL THERAPY

123 W. Plymouth Ave. • DeLand, FL 32720
386-736-8865 • www.BattenDental.com



Pat and Toni's

Sweet Things

**CHOCOLATE - CANDY
FUDGE - ICE CREAM
& NOSTALGIA**

The Sweetest Place in Town

124 N WOODLAND BLVD DOWNTOWN DELAND
386-734-0066

When you are tired of dealing with unreliable computer consultants who are impossible to reach, nickel and dime you over everything, and fail to deliver the level of service you expect...



phintec
making technology simple

www.phintec.com

321-214-2500

What's Playing Around You?

THE CENTRAL FLORIDA THEATRE ALLIANCE

Daytona Playhouse

Daytona Beach

DaytonaPlayhouse.org

September 6 - 22



Shoestring Theatre

Lake Helen

ShoestringTheatre.net

September 12 - 29



Gateway Center for the Arts

DeBary

gatewaycenterforthearts.org

August 2 - 4

September 13 - 22



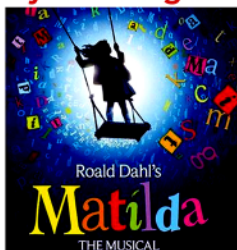
The Little Theatre

New Smyrna Beach

NSBPlayers.org

July 18 - August 4

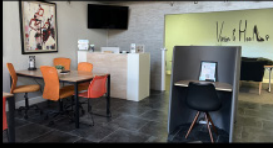
September 12 - 22



The Smell of the Kill



Modern & Bright Workspace • High Speed Internet • Onsite Printer • Always Fresh Coffee



VISION & HEELS

FUELING & EMPOWERING WOMEN THROUGH COWORKING

100 E. New York Ave., Suite 103

Downtown DeLand, FL 32724

386.977.9637 • info@visionandheels.com

visionandheels.com



Onsite Mailbox • Office Supplies • Conference/Podcast Rooms • Flexible and Easy Booking

OVER 20 YEARS SERVING OUR COMMUNITY.



Kemp
REALTY GROUP

Listening... Connecting... Buyers and Sellers



**Two Convenient
Downtown Locations!**

**135 E. Church St.
& 110 W. Indiana**

**Give us a call at
386.801.4276**

Search Listings at www.LiveLoveDeLand.com

GET A STAGE WORTHY SMILE!



ANTHONY J. VISCONTI, III, DMD
FAMILY & IMPLANT DENTAL CARE



333 East New York Avenue, Suite B
DeLand, FL 32724

Tel 386.734.7330 • Fx 386.734.0329

viscontidental.com

SPONSORS & DONORS MAKE IT HAPPEN!

GET RECOGNIZED FOR YOUR SUPPORT!

When you make a donation of \$100 or more, your name will be listed in the Athens Theatre Company playbills for the rest of the season!



TAKE A SEAT CAMPAIGN

Honor Your Family • Celebrate a Birthday
Remember A Loved One • Rejoice A Birth
Commemorate A Marriage

These are all great reasons to name a seat at the historic Athens Theatre. As a seat donor, your name or that of a loved one will be engraved on a permanent brass plaque on the back of a luxurious, custom-designed seat. You will also be added to the Donor Plaque located in the lobby. Premium Seats are still available for:

\$1,000, \$750 or \$500

Last year, the Athens Theatre sold over 22,400 tickets to...

**Independent and Cultural Films
Play & Musicals
Live Performances**

This is possible with...



GREAT TALENT & GREAT PEOPLE! OUR AUDIENCES! SPONSORS & DONORS!



Sponsors make it happen... help us make the Athens Theatre DeLand's premier performing arts center by purchasing your Star and "light" our way to the future... Your engraved star will be placed either in a prominent place in our lobby or along the stairways leading to the balcony. Become a member of our star-studded cast today.

\$2,500-Silver Level • \$5,000-Gold Level

ORDER YOUR STAR, SEAT OR MAKE A DONATION
by calling (386) 736-1500 or
email DonorSupport@AthensDeLand.com

ATHENS THEATRE DONORS

GOVERNMENT SUPPORT

Cultural Council of Volusia County

\$15,000-\$24,999

Clifford & Lavonne Strachman

\$10,000-\$14,999

Kristen Bright
Lusignan Foundation

\$5000-\$9,999

Bill & Pam Brown
Clifford & Lavonne Strachman

\$2,000-\$4,999

Latitude at
Daytona Beach Foundation
Stephen & Claudia Roth

\$1,000-\$1,999

Joe Aiello
William & Martha Holler
Wendy Mara
Barry Midway
Mike & Kim Weathers

\$500-\$999

Samuel Atkinson
Timothy Boynton & Alvin Providence
Tricia Danielsen
Albert Eid
Richard M. Kelton
Dr Jeffrey A. Norton M.D.
Robert & Mary Dell Paterno
Mac & Kathy Steen

\$250-\$499

Rosenberg Burton
Sharon Chausse
Virginia & Joseph Cornella
Tracey Danielsen
Tricia Danielsen
John & Sandra Dash
Dr. Albert Eid
Merrier Fogle
Greg & Tiffany Freed
Kevin & Carmen Gallagher
Lionel Hector
Dawn & Rudi Hoffman
Shirley Horn
Maxine House

Jack & Jane Manwaring Foundation

Michael Myers & Melinda Lufkin
Rebecca Lynch
Michael Myers
Mary & Laura Paterno
Stephen & Debra Ryan
The Sarnes Family
Schmude Family
Timothy Taylor
Lisa Vorakoun
Scott and Karen Weiss
Donald & Leslie Whalen
112 West LLC

SCAN QR CODE FOR LINK OR
VISIT ATHENSDELAND.COM
TO DONATE!



\$100-\$249

Paul Abbott
Becky & Anthony Adesso
Ambrico Family Foundation
Suzanne Atkinson
Elaine & Bruce Barritt
Linda Bindler
Elizabeth Blair
Dot Brown
Vicki Chamelin
Sandra Colon
Chad & David Conley
Jean Conner
Kay Cordero
Amanda Cortright
Randy Deveaux
Jeff Dickinson
Ruby & Bob Dillon
Ann Dobranic
Thomas Doughtly
EFG Orchid
James East
The Falasco Family

William Feyk
Celeste Fletcher-Brozorich
Merrie Helyn Fogle
Mark Friend
James Galzerano
Becky Garbacik
Dr. & Mrs. Rhonda Gilliard
Michelle Giraldo
Philip Goldthwait
Ella Hall
Lionel Hector
Debra Height
Agnes Hindulak
J&J Security
Rev. Kent & Peg Klophaus
Tyler Kosmas State Farm
Dennis Laube
David Le Blanc
Thomas Lewis
Paula & Gary Lindsay
Melinda Lufkin
Robert Martin

Dr. Richard Martorano
Peter Mastropolo
Sarah McAskill
Jeff McMullan
Lacey McMullan
The Miles Family
Donna Miller
Stephen & Joanne Mosher
Michael Myers
Rob & Nancy Naulty
Paula Olivero
Beth Pattison
Heidi Payne
Diane Reed
Stephen & Janet Rhode
Claudia Ricci
Gary & Josephine
Rinkerman
Burton Jerome Rosenberg
Scott Roser
Donna Ross
Marty & Ali Ross

Stephen & Debra Ryan
Madeline Schilling
Dennis Sobeck
Lary Sorensen
Taylor & Carla Spalding
Charlie Spells
Ramona Starnes
Larry Stein
Laureate Alpha Upsilon
Justin Dietrick Van Putten
Allison Van Zandt
The Wagoner Family
Scott & Karen Weiss
Judy Whitelock
David Whitmore
Pamela Whittet
Susan Williams
David & Sally Zanden
Allisan Van Zandt
Bridget Voll

All listed have made a donation to the Athens Theatre within the last 12 months.

Thank you for supporting the Athens Theatre

**We thank our
Share the Spotlight Sponsors!**

MBI

DIRECT MAIL + DIGITAL



Advanced Urology Institute
Anthony J. Visconti, III, DMD
Artisan Downtown
Bodhi + Sol Spa
Cress Restaurant
Dale D. Batten, DMD, PA
Family Book Shop
Kemp Realty Group

Latitude at Daytona Beach Foundation
Marketplace at Rivertown
Phintec
Reliant Title Group, Inc.,
d/b/a Volusia Title Services
Sanz & Sanz Psychological Associates
The Anointed Olive
Turn-Key Designs
Vision and Heels

