

In Association with Dramatists Play Service
The Athens Theatre Presents

BRAM STOKER'S
DRACULA
BY STEVEN DIETZ



© 2024
Mike Kitaif

PARENTS STRONGLY
CAUTIONED
PG-13

SEPT 20 – OCT 13

PRESENTING SPONSOR
Quality
Quickscreen
CELEBRATING 50 YEARS OF
PRINT AND SIGN SOLUTIONS

ATHENS THEATRE REMAINING 2024 SEASON 2025

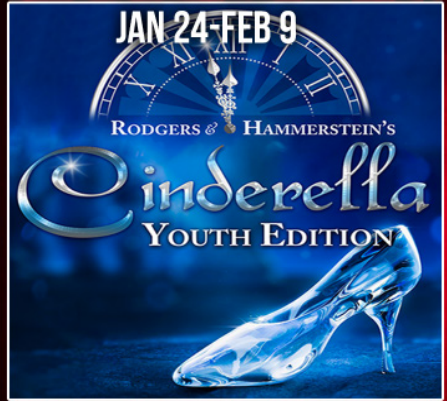
NOV 22-DEC 15



CHRISTMAS CAROL

A Musical Based on the Story by Charles Dickens

JAN 24-FEB 9



RODGERS & HAMMERSTEIN'S

Cinderella

YOUTH EDITION

FEB 28-MAR 23



THE FULL MONTY

PG-13

APRIL 11-MAY 4



GREASE

www.AthensDeLand.com

PLEASE DONATE TO SHOW
OUR ACTORS AND CREW
HOW MUCH THEIR DEDICATION
AND TALENT IS APPRECIATED!



Donate Directly
to the Athens



Donate Using
PayPal

BRAM STOKER'S DRACULA

By Steven Dietz

Originally Produced by the
Arizona Theatre Company, Tucson/Phoenix, Arizona

Artistic Director
David Ira Goldstein

Managing Director
Robert Alpaugh

Director
Frank Ramirez

Scenic Design
Michael S. Brewer

Prop Designer
Tori Oakes

Assistant Director
Christie Young

Lighting Designer
Nicholas Hogan

Scenic Charge Artist
Bonnie Sprung

Intimacy Director
Jarrett Poore

Resident Costume Designer
Tamara Marke-Lares

Production Supervisor,
Stage Manager
Diane McLean

Fight Director
Bill Warriner

Sound Designer
Lamar Hickley

Costume Shop Manager,
Production Associate
Amy Uppercue

Assistant Director of Sound
Dylaney Sabino

Assistant Stage Manager
Madison Clark

Assistant Stage Manager
Megan Quiroga

Sept 20th - Oct 13th | The Athens Theatre

Bram Stoker's Dracula is presented through special arrangement with Dramatists Play Service, Inc.

All authorized performance materials are also supplied by Dramatists Play Service, Inc.

SUPPORT FROM



PRESENTING SPONSOR

SERVING WEST VOLUSIA



Since 1975

**CELEBRATING 50 YEARS OF
PRINT AND SIGN SOLUTIONS**

**FULL SERVICE PRINTING
SIGNS & BANNERS**

386-736-1353

WHEN
QUALITY
REALLY
MATTERS

LOCATION



**1441 N. AMELIA AVE.
DELAND**

**HOURS: 8:30 TO 5:00
MONDAY - FRIDAY**



OWNERS - STEVE & DONNA WHITE

WWW.QUALITYQUICKPRINT.COM

Athens Theatre 2024~2025 Board of Directors

Joseph Maxwell, President
Christopher Kemp, Vice President

Jeffrey Bates
Daniel Conard
Joyce Darch
Stephen Dornsife
Donald Fields
Tom Fleishel

Jay Keller, Secretary
Michael Kelton, Treasurer

Lyndsay Fuller
Irwin Landau
Robert Mann
Pamela Rintz
Judith Whitelock
Michael Wingo



All events are sponsored in part by the
Cultural Council of Volusia County and Volusia County.



Director's Notes...

Bram Stoker's Dracula, first published in 1897, has been terrifying readers for over a century, inspiring countless adaptations in film, musicals, and plays. I fell in love with the novel, captivated by its masterful storytelling, always on the edge of my seat in anticipation of the Count's next move, and eager to see how Van Helsing, Seward, Mina, and Harker would band together to stop Dracula's reign of terror over London. The novel is rich with fully realized characters, eerie settings, and an atmosphere that blends excitement, anxiety, fear, and at times, full-on terror. It transcends the horror genre, standing as a literary classic that weaves fear into its beautifully written, robust prose.

In this production, the Athens Theatre presents a clever adaptation of *Dracula* by award-winning playwright Steven Dietz. Our version aims to capture all the romance, mystery, sensuality, and sheer terror that haunted the original novel while exploring the complex themes woven into the text. It offers a glimpse into 1890s London, addressing societal fears of the time—the rise of the New Woman movement, anxieties around same-sex affection, and xenophobia. All of this is wrapped in a production brimming with special effects, stellar performances, and spine-chilling moments that will leave you questioning what evil lurks in the shadows—both in the world around us and within our minds.

Now, I invite you to sit back, cover your necks, hold your loved ones close, and join us on a journey to Transylvania as Dracula sails forth to wreak havoc on London—and on the audience here at the Athens Theatre.

Frank Ramirez

Director of *Bram Stoker's Dracula*



NOTE TO AUDIENCE: - The videotaping or audio and/or visual recording of this production is a violation of United States Copyright Law and an actionable federal offense.



I enjoy Senior Living without retiring.

*-Captain Wendell Phillips,
Scenic Tour Guide and Alliance Community Resident*

Be Part of *Our History*

Celebrating 70 Years!

Alliance Community opened in 1954 in the heart of DeLand on a 10-acre tract of land. Today, we are a thriving 25-acre active senior living community that has impacted generations of families.

DID YOU KNOW?

- You only have to be 60
- Single family homes, villas and apartments are available
 - Snowbirds are welcome
 - Retirement is not a requirement
- Affordable Life Plan program available with activities designed for you
 - You keep your Independence

Scan the QR code or call to schedule a personal tour and stay for lunch on us.



**Alliance
Community**



644 S. Woodland Blvd., DeLand, FL 32720 | AllianceCommunity.org
1-800-334-4133 Sales & Marketing Direct Line: 1-386-736-1814

Meet The Cast



Noah Clark (Seward, U/S Dracula, Fight Captain) is very excited for his seventh show with The Athens Theatre! Noah has been seen at various theaters in Nashville, TN as well as the Orlando area in roles such as Pseudolus in *A Funny Thing... Forum*, Shrek in *Shrek TYA*, Gomez in *The Addams Family*, Pippin in *Pippin*, and Chad in *All Shook Up*, among others. When not doing musicals, Noah runs the audio company HCM Productions where he produces music for numerous theatrical productions as well as recording vocals. He would like to thank the Athens Theatre, friends, family, and his wonderful girlfriend for being so supportive of this opportunity. Noah is so honored to be part of such an intense show with such wonderful people!



SarahRae Jackson (Van Helsing) is honored to be back on the stage after making her Athens debut as Madame in *Beauty and the Beast*. SarahRae is new to Florida but has previously been seen on the west coast in roles such as Bette in *The Marriage of Bette and Boo*, Athena in *The House of Atreus*, and the title role in the *Defenseless Creature*. SarahRae is also a classically trained Mezzo Soprano and currently sits on the board for the New York Chamber Choirs. You can find her @sarahraejay on all things social. She would like to thank her amazing wife for believing in her and supporting her through everything.

Only for this production, enjoy a...

glass of sweet
**BLOOD RED
PROSECCO**

box of
**BLOOD
TRUFFLES**

\$7

\$4
(2 per box)

An advertisement for Blood Red Prosecco and Blood Truffles. The background is black with red text and images. On the left, there is a bottle of Rosello Prosecco and two glasses filled with sparkling wine. On the right, there is a box of Blood Truffles, a lit candle in a holder, and a decorative silver candlestick. The price for the prosecco is \$7, and for the truffles, it is \$4 (2 per box). The logo for Sweet Things is at the bottom center.



Boulevard Tire Center

Focused on Tomorrows Solutions Today



**GET
TIRE PRICES**



**SHOP FOR
AUTO REPAIRS**



**SCHEDULE
AN APPOINTMENT**



**TRY ON SOME
WHEELS**



**Axle, CV Joint &
Driveshaft
Repair**



Belts & Hoses



Brake Repair



**Climate Control
Systems**



**Cooling System
Repair**



**Differential
Repair**



**Electrical and
Electronic
Systems**



**Engine
Diagnostics and
Performance**



**Four Wheel
Drive Systems**

Car Care You Expect... Customer Service You Deserve.

386•734•6447  **BoulevardTire.com**



**BELLEVUE • BUNNELL • DELAND • EDGEWATER • LADY LAKE
MOUNT DORA • ORANGE CITY • ORMOND BEACH • PORT ORANGE**

Meet The Cast



Krystal Kennedy (Lucy) is absolutely thrilled to be back on the Athens stage in such an iconic story! Favorite past credits include Annette in *Cruel Intentions: The 90s Musical* (which also starred Fredy Ruiz as Sebastian), Jenny in *The Shape of Things*, and Franca in the world premiere of *Belladonna: The Musical* (a role she originated). Most days she can be found at Universal Orlando singing with some frogs in Hogsmeade or telling tales in Diagon Alley. Thank you to Frank and the creative team for entrusting me with this role, and for bringing Fredy and me onstage together again! And thank you to my ever supportive and loving family and friends - I'm so grateful for my community. Enjoy the show!



Paul Pelletier, Jr. (Attendant, U/S Harker and Seward, Ensemble, Fight Captain) is an actor, singer, playwright, and combatant from Orlando. Pelletier is also a graduate of The University of Central Florida, having graduated with a BFA in acting. Over the course of his 7+ year career in the theatre, Pelletier has been seen as Laurie in *Little Women the Musical*, Dickon in *The Secret Garden*, Duke Senior in *As You Like It*, The White Rabbit in *Shrek the Musical*, and in the ensemble of shows like *Beauty & The Beast* and *RENT*. Pelletier is also a huge advocate for new voices and pieces in the theatre, having been both a playwright and actor for companies such as Project Spotlight and The Orlando Fringe Festival. When not on the stage, he is an avid Dungeons & Dragons player, having been in games lasting over four years. This is Pelletier's first show at the Athens and he is so grateful for a wonderful start! www.paulpelletierjr.com

SATURDAY K-2 MUSIC & DRAMA WORKSHOPS



OCTOBER 12TH



NOVEMBER 9TH



DECEMBER 7TH



For more information or to sign up:
www.athensdeland.com/youth-theater/
Email: Education@athensdeland.com • Phone: 386-736-1500 Opt. 3



Where good friends and good wine meet.



the
**Elusive
Grape**

129 N. Woodland Blvd. • Downtown DeLand
386-785-2467 • www.elusivegrape.com

Serving as DeLand's Living Room Since 2003

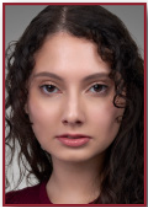


A proud sponsor of the Athens Theatre's Box Suite Packages.

Meet The Cast



Jena Rashid (Vixen, Attendant, U/S Mina, Ensemble) is a Pakistani, female-identifying theatre artist. She graduated from the University of Central Florida with a BA in Theatre Studies and a minor in music. Jena has worked as a stage manager, director, playwright, actor and other roles throughout her career. Since she graduated, she has interned at Orlando Shakes and Florida Studio Theatre and currently works with Jobsite Theater as a Producing Associate. Jena is also an affiliated artist of the National New Play Network and currently works full time with Orlando Shakes. In addition, she still writes plays when she can, and her works can be found on the NewPlayExchange.org. She is also in the Whiskey Theatre Factory production of *Everyone's Fine with Virginia Woolf* at at Fringe ArtSpace.



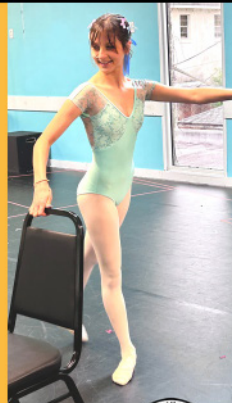
Victoria Rivera (Mina) is thrilled to return to the Athens stage for a second time to help bring *Dracula* to life alongside this talented cast. She is a 2023 graduate of University of Central Florida where she was also able to perform with UCF Opera. She has previously been seen as Hermia and Titania in *A Midsummer Night's Dream* and as Kathy in *Singin' in the Rain*. In her free time, she likes to make jewelry. She wants to thank her friends, family, and wonderful boyfriend for their support, and she hopes everyone enjoys the show and the hard work that everyone has put into it!



Enhance your Child's Skill and Performance Technique.



**PRIVATE
VOICE,
ACTING
AND
DANCE
LESSONS**
LESSONS AVAILABLE
FOR AGES 7 AND UP



For more information or to sign up, go to athensdeland.com/lessons
or email Education@AthensDeland.com



WWW.JOEHHEARNEVENTS.COM

-AWARD WINNING PLANNERS-

BEST EVENT PLANNERS- NEWS JOURNAL

BRIDES CHOICE AWARD - WEDDING WIRE



“YOU ONLY HAVE ONE CHANCE
TO MAKE THE DAY PERFECT.”



A PROUD SPONSOR OF THE ATHENS THEATRE

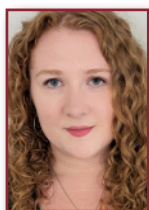
JOE HEARN

Meet The Cast



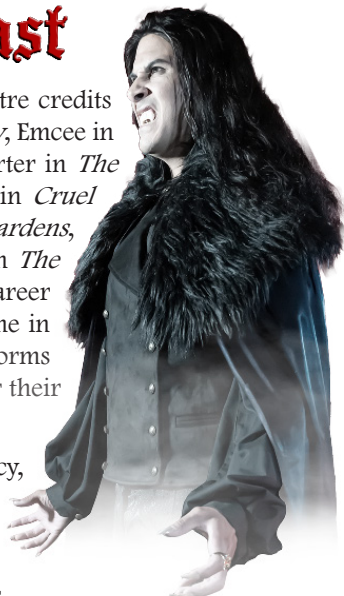
Fredy Ruiz (Dracula) Favorite past theatre credits include Gomez Addams in *Addams Family*, Emcee in *Cabaret*, Guido in *Nine*, Dr. Frank-N-Furter in *The Rocky Horror Show*, Sebastian Valmont in *Cruel Intentions the Musical*, Pablo in *Native Gardens*, Usnavi in *In the Heights*, and Adolpho in *The Drowsy Chaperone*. Fredy's performing career

has traveled him around the world, but when he is home in Orlando, Fredy is a regular at Universal Orlando and performs at Disney World. Fredy thanks his friends and family for their support. Insta: @thefredyruiz



Gabriella Smith (Maid, Vixen , U/S Lucy, Ensemble) is excited to return to the Athens Theatre, where she was recently seen as Panacea in *A Funny Thing Happened on the Way to the Forum*, Mrs.

Snoringman in *White Christmas*, and Ensemble in *RENT* and *Beauty and the Beast*. She is studying theater at the University of Central Florida. Previous credits include *As You Like It* (musician, Phoebe U/S, Denis U/S), *Mary Poppins* (Dance Captain, Ensemble), and *Romeo and Juliet* (Lord Capulet). She would like to thank the entire creative team for this fabulous opportunity!



Thank You To Our New Patron Sponsors!

\$15,000 - \$25,000 Star Performer Sponsors:
Clifford & Lavonne Strachman

\$10,000 - \$14,999 Leading Actor Sponsors:
Dr. Bruce & Carolyn Bigman
Kristin Bright
Deborah Littler

\$2,000-\$4,999 Ensemble Performer Sponsors:
Joe Aiello & Berry Midway
Pamela & Rick Rintz
Burt & Arleen Rosenberg

OUR CUSTOMERS
TAKE
CENTER STAGE!



MAINSTREET
COMMUNITY BANK
OF FLORIDA

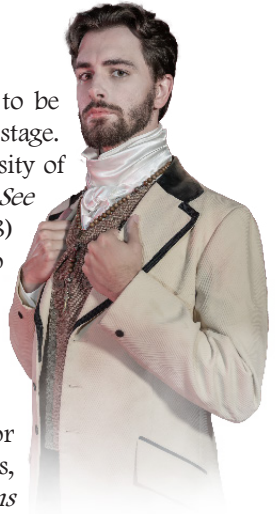
BankonMainstreet.com

Member
FDIC

Meet The Cast



Seth Thornton (Jonathan Harker) is excited to be making his professional debut on the Athen's stage. Seth is currently studying Acting at the University of Central Florida. Prior theatre credits include *See Rock City* (Raleigh) *12 Angry Jurors* (Juror #8) and *As You Like It* (Jacques). Seth would like to thank his family and friends for supporting him through it all. Seth likes listening to hip hop, tiptoeing through the raindrops, making money moves, and occasionally reading a good book.



Alan Ware (Renfield) Perhaps best known for his comic antics in many Athens productions, including *The Producers*, *Noises Off!*, *Addams Family*, *Les Miserables*, *Clue*, *A Christmas Story*, *Legally Blonde*, *Guys & Dolls*, and *Greater Tuna*, it wasn't until portraying the evil monk Frolo in *Hunchback of Notre Dame* last year that Alan took a turn to terrify. Tonight, as the lunatic Renfield, Alan reprises a role that he hasn't touched in over 40 years. He dedicates his performance to Mary Anne Kelley, James Kane, CJ Merrill and of course to his beloved Yves. He has served the Athens as Facility Manager since 2011 and is channeling the inner rage of Renfield whenever he finds gum stuck under your seat. . . heheheheheh!

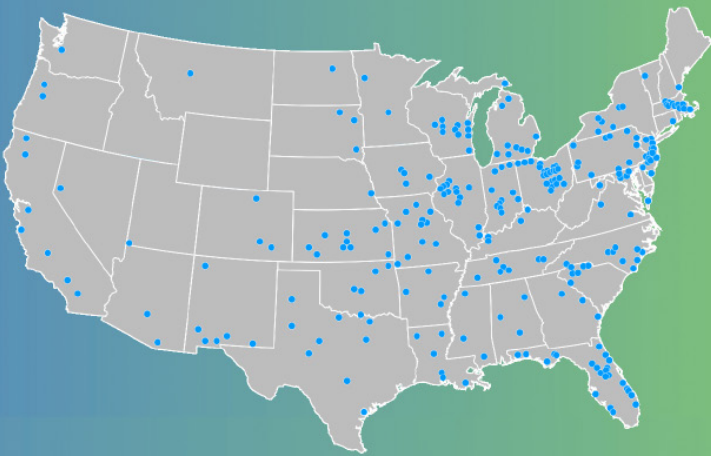
We Thank our Athens Theatre Staff

EXECUTIVE DIRECTOR ALEXA A. BALDWIN	FACILITY MANAGER ALAN WARE	DEVELOPMENT DIRECTOR GRACE BOYNTON
PRODUCING ARTISTIC DIRECTOR FRANK RAMIREZ	ASST. FACILITY MANAGER CJ MERRELL	BOX OFFICE JENNI SWEINHAGEN KAY PHILLIPS BRIANA HOLLOMAN BARBARA BEASLEY ASHLEY HEW
PRODUCTION SUPERVISOR DIANE MCLEAN	HOUSE MANAGER AMANDA TYLER CLIFFORD STRACHMAN	ATHENS ACCOUNTANT PAM KEEZEL
DIRECTOR OF MARKETING AND COMMUNICATIONS SANTI GABINO	ASSISTANT HOUSE MANAGER CLIFFORD STRACHMAN	DIRECTOR OF COMMUNITY RELATIONS CRAIG UPPERCUE
MARKETING ASSISTANT BRIANA HOLLOMAN	COSTUME & PROP SHOP MANAGER AMY UPPERCUE	DIVERSITY, EQUITY & INCLUSION ADVOCATE SHONDA THURMAN
DIRECTOR OF SOUND LAMAR HICKLEY	YOUTH ACADEMY DIRECTOR ANGELYN RHODE	RESIDENT GRAPHIC ARTIST BOBE KENEMER
DIRECTOR OF LIGHTING NICHOLAS HOGAN	TEACHING ARTISTS SAMANTHA RODRIGUEZ LAUREN STROMAK	

Connect



**We make connections
across our community.**

We connect the community to local news and information. We also connect your business to more customers. And we can connect your brand story to a premium, engaged audience like no one else.



LOCALiQ | Daytona Beach

The
“World’s Premier”
Johnny Cash
Tribute
 Starring Terry Lee Goffee
October 2nd

Grandview Gardens

Single-family Homes
 from the \$300s



For more information call us at
 (407) 874-5830 or visit mattamyhomes.com

🏠 All illustrations are artist's concept. All dimensions are approximate. Prices, specification, terms and conditions subject to change without notice. Copyright © 2024 Mattamy Homes. E. and O.E. Builder's #CGC1519466 MATORL854 07/2024



When you are tired of dealing with unreliable computer consultants who are impossible to reach, nickel and dime you over everything, and fail to deliver the level of service you expect...



phintec
 making technology simple

www.phintec.com 321-214-2500



The Cartoons Of
MAX FLEISCHER

A FUN AFTERNOON OF CLASSIC ANIMATION
 FROM THE ICONIC FLEISCHER STUDIOS

OCTOBER 5TH • 2PM

Go with a good neighbor

As your local State Farm® agent, I'll be there whenever you need me with Good Neighbor service you can count on. Give me a call.

Proud to support Athens Theatre!




Amanda Agnew Ins Agency Inc
 Amanda Agnew, Agent
 120 S Woodland Blvd, Suite B
 DeLand, FL 32720
 Bus: 386-960-7878
 www.insurewithamanda.com

State Farm
 Bloomington, IL

Olive Oil & Balsamic Vinegar Tasting Store

Open Mon-Fri | 11am-6pm
 Sat | 10am-5pm



The Anointed Olive
 LLC

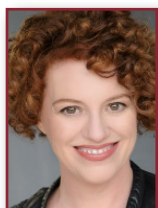
118 N. WOODLAND BLVD, DELAND • 386-873-8123 • THEANOINTEDOLIVE.COM

FOLLOW US   

Meet The Creative Team



Frank Ramirez (Director) Frank Ramirez is a dedicated entertainment professional with over twenty-plus years of experience. His journey in the arts has taken him behind the scenes, on stage, in union management, production management, stage management, general arts management, production director, and creative guidance on multiple levels in the arts industry. He joined the Athens Theatre in 2018, has directed numerous productions on the Athens stage, and is thrilled to be the Producing Artistic Director for this beautiful jewel of a theatre in the heart of Downtown DeLand. In the past, Frank has been part of multiple productions and organizations on Broadway, Off-Broadway, professional regional theatres, event management, and theme park entertainment management. He has also been associated with The Jim Henson Company via Heather Henson's IBEX Puppetry, where he served as Company Manager and facilitator of their worldwide full-scale theatrical productions in Canada, China, Kazakhstan, Indonesia, and nationally across the USA. Frank also worked as a guest artist instructor of Stage Management at SUNY Potsdam/The Crane School of Music.



Christie Young (Assistant Director, US Van Helsing) is excited to step back into directing under Frank's guidance. Athens audiences have seen her onstage in *Beauty and the Beast* (Mrs. Potts), *Young Frankenstein* (Frau Blucher), *Rock of Ages* (Regina), and *Forum* (Domina). She's performed in theatres from Alaska to New Hampshire. Other local performances include Lady Eugenia in *A Gentleman's Guide to Love and Murder* (Osceola Arts), ensemble in *Kiss Me Kate* (Orlando Shakespeare Theatre), and Helga the Germany Storyteller in *Holidays Around the World* (Epcot). She is a full-time actor and puppeteer for Universal Orlando Resort (Grinchmas, Wizarding World of Harry Potter, DreamWorks Imagination Celebration) and holds an MFA in Musical Theatre from the University of Central Florida. Many thanks to my family and friends for their continued support! Instagram/Facebook/TikTok: @foreverchristieyoung.

SPECIAL THANKS

Mike Kitaif

Publicity and Production Photos

Kevin Majestic Productions

Video Promo

Daytona State College & Orlando Family Stage
Props

Moonflower

"The Spirit of Santana"



The Parched Oak

RESTAURANT + BAR

145 N. Woodland Blvd.
DeLand, FL 32720
386-873-4976
theparchedoak.com



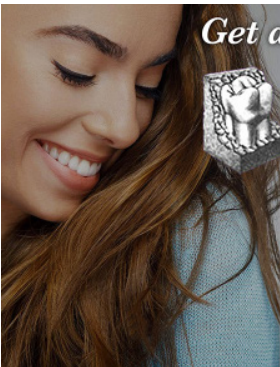
Delivering quality in our meals and cocktails, in an environment to keep you coming back.

Get a Smile Worthy of a Standing Ovation!

DALE D. BATTEN, DMD, MAGD
Cosmetic and Comprehensive Dentistry

CROWNS • BRIDGES • IMPLANTS • FILLINGS • EXTRACTIONS
DENTURES • COSMETIC DENTISTRY • VENEERS
TEETH WHITENING • PERIODONTAL THERAPY

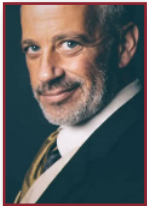
123 W. Plymouth Ave. • DeLand, FL 32720
386-736-8865 • www.BattenDental.com



Meet The Creative Team



Jarrett Poore (Intimacy Director) (They/Them) holds a B.F.A. in Musical Theatre and an M.A. in Theatre from UCF. They have worked professionally as an actor, director, and teaching artist at local and national levels with companies such as the Orlando Family Stage (formerly the Orlando Repertory Theatre), the Orlando Shakes, and the Chicago Underscore Theatre as well as making magic at Universal Studios and Walt Disney World! Favorite credits: Toad in *A Year with Frog and Toad* (Orlando Family Stage); The Baker in *Into the Woods* (ME Theatre); Martha/Rocky/Billy/Maxwell in *The True Story of the Three Little Pigs* (Orlando Shakes) Snug in *A Midsummer Night's Dream* (Orlando Shakes); Officer in *Comedy of Errors* (Orlando Shakes) Sid in *SCREAM GAYS* (Orlando Fringe); The Producer in *The Spider Queen* (Orlando Fringe; New York Theatre Festival); The Stage Manager in *Oh Hi, Johnny!* (Chicago Underscore Theatre). Commercials and Television: *Stranger Things* (Netflix), *Sleeper App*, Universal Orlando Resort. They are the current president of The Orlando Artist Guild. Love to Mommie Dearest, Bryan, and of course, Noni. IG: @jarrettpoore Web: jarrettpoore.com

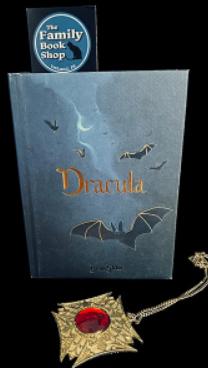


Bill Warriner (Fight Director) Professional Fight Director since 1991. He's done some stuff.

**Didn't win a Dracula book in the raffle?
Get your deluxe copy—or choose from
over 400,000 other titles—
at The Family Book Shop!**



INDEPENDENT BOOKSTORE • NEW, USED & COLLECTIBLE BOOKS



1301 N. Woodland Blvd • DeLand, FL 32720 • 386-736-6501
Open Mon-Sat 9:30am-5:30pm • Email: familybookseller@yahoo.com • www.familybookshopdeland.com



BRAM
STOKER'S

DRACULA

~ CAST ~

Fredy Ruiz.....	Dracula
Victoria Rivera	Mina
Krystal Kennedy.....	Lucy
Alan Ware	Renfield
Seth Thornton.....	Jonathan Harker
Noah Clark.....	Seward, U/S Dracula
SarahRae Jackson.....	Van Helsing
Gabriella Smith.....	Maid, Vixen, U/S Lucy, Ensemble
Jena Rashid.....	Vixen, Attendant, U/S Mina, Ensemble
Paul Pelletier, Jr.	Attendant, U/S Harker and Seward, Ensemble

~ TIME ~

1897

~ PLACE ~

London, England
Transylvania

~ SETTING ~

This play moves quickly amid numerous environments, the primary ones being: Lucy's bedroom, Renfield's cell, Dracula's castle, and the guest room at the asylum.

Bram Stoker's Dracula will be performed in two Acts with one 15-minute intermission.

~ PRODUCTION TEAM & TECHNICAL CREW ~

Director	Frank Ramirez
Assistant Director	Christie Young
Intimacy Director	Jarrett Poore
Fight Director.....	Bill Warriner
Scenic Designer	Michael Brewer
Lighting Designer/ATD.....	Nicholas Hogan
Costume Designer.....	Tamara Marke-Lares
Prop Designer/TD/Scenic Build	Tori Oakes
Director of Sound.....	Lamar Hickley
Assistant Director of Sound.....	Dylaney Sabino
Scenic Charge Artist.....	Bonnie Sprung
Executive Director	Alexa Baldwin
Development Director.....	Grace Boynton
Production Supervisor/Stage Manager	Diane McLean
Director of Marketing and Communications	Santi Gabino
Diversity, Equity, and Inclusion Advocate	Shonda Thurman
Costume Shop Manager	Amy Uppercue
House Manager.....	Amanda Tyler
Assistant Stage Manager/Deck Chief	Madison Clark
Assistant Stage Manager.....	Megan Quiroga
Fly Manager	Braeden Hunt
Run Crew	Joshua Freeman
Lightboard Operator	Madison Thompson
Spotlight Operators	Brayden Volkman, Dante Overley



Special Audio
Described Performance
on Sunday, October 6th.



Special ASL/English
Interpreted Performance
on Friday, October 4th.



ALIVE

the TRIBUTE

OCTOBER 16TH

ATHENS THEATRE
CONCERT SERIES

Pat and Toni's
Sweet Things

CHOCOLATE - CANDY
FUDGE - ICE CREAM
& NOSTALGIA

The Sweetest Place in Town

124 N WOODLAND BLVD DOWNTOWN DELAND
386-734-0066

Meet The Production Team



Michael S. Brewer (Scenic Design) is a 1987 graduate of Wright State University in theatre design and technology. He started working as a scenic artist in regional theaters, the Alliance Theatre in Atlanta, La Jolla Playhouse, Cincinnati Playhouse, and Cleveland Playhouse. He is currently based in Ohio and has been designing for local theaters there. At the Athens, he has designed *Guys and Dolls*, *A Christmas Story*, *Clue*, *Elf*, *I love you, You're Perfect, Now Change*, *Ragtime* and recently, *Disney's Beauty and the Beast*.



Nicholas Hogan (Lighting Designer, Director of Lighting, ATD) A Florida based Lighting Professional is happy to be working on his third season here at the Athens Theater. Some of his favorite designs at the Athens include *Beauty and the Beast*, *White Christmas*, *Jimmy Buffett's Escape from Margaritaville*, and *Misery*. Additionally, Nick works as a designer across Florida, most recently having designed shows in partnership with Stetson Opera and the Barn Theater.



Tamara Marke-Lares (Resident Costume Designer) is a sculptor, painter, printmaker, and creature marionette maker. She has been designing costumes freelance for 19 years. She has designed for Dance, Ballet, Opera and Cirque productions, as well as numerous collaborative and solo productions. Some favorite costume credits include *Margaritaville*, *Rock of Ages*; *Ragtime*, *Shrek!*, *Elf*; *Clue*; *Ain't Misbehavin'*; *Jerry's Girls*; *Chicago*; *The Complete Works of William Shakespeare, Abridged*; *James and the Giant Peach*; *Guys and Dolls*; *Into the Woods*; *The Wedding Singer*; *Jekyll & Hyde*; *The Lion King, Jr.* and *The Producers*. This is her seventh season with the Athens Theatre. Tamara spends her days teaching at Ivy Hawn Charter School, creating art and costumes and being amazed by her two crazy-talented children.

Live
Shadow Cast
Performance
Must be 18+ to attend

DeLand Pride and The Absent Friends Presents

PRIDE

THE ROCKY HORROR
PICTURE SHOW

October 17 & 18
8pm Showtime

WEST VOLUSIA'S HOMETOWN NEWSPAPERS
COVERING NEWS BIG AND SMALL THROUGHOUT DELAND,
DELTONA, ORANGE CITY, DEBARY & ALL AROUND THE REGION.



The West Volusia
Beacon **EXTRA!**
NEWSPAPERS

PROUD TO SUPPORT THE ARTS IN WEST VOLUSIA

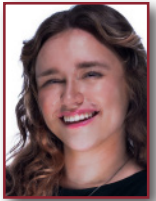


110 W. NEW YORK AVE. DELAND, FL 32720
386-734-4622 • BEACONONLINENEWS.COM
EMAIL: INFO@BEACONONLINENEWS.COM

Meet The Production Team



Lamar Hickley (Sound Designer/Director of Sound) has always been involved with the Arts. Since the age of 8, he has acquired the skill to play multiple instruments and gained knowledge in the area of sound reinforcement. He has over 20 years of experience as a recording engineer, in live mixing, and music production. In 2012, he received his AS degree in Music Production Technology and in 2014 he received his BAS in business supervision and management. Lamar's passions in the industry of audio granted him the "Most Outstanding Student" award in 2012. As a result, he was selected as the face of the Music Production Technology at Daytona State College. In 2016, Lamar was introduced to the Athens family and is honored to have his company "Kevin Majestic Productions," responsible for ensuring all the audio needs are met with nothing but the best sound and quality!



Dylaney Sabino (Assistant Director of Sound) is a lover of Halloween and hopes you're ready for *Dracula!* This will be Dylaney's third season with The Athens, where she has live mixed shows such as *Rent*, *White Christmas*, *Noises Off!* and more, as well as assisted in the design of Athen's recent success *Beauty and the Beast*. She is grateful to God and excited to be representing Kevin Majestic Productions in her role, and hopes you enjoy the show!





the **PARTY** EXCHANGE

YOUR ONE STOP PARTY SHOP!

**YOUR COMPLETE SOURCE
FOR DECORATIONS,
PLANNING SERVICES,
RENTALS, AND COSTUMES!**



**2436 S. VOLUSIA AVE.
ORANGE CITY
(386) 774-8477**



Meet The Production Team



Tori Oakes (Prop Designer, TD, Scenic Build) is a Central Florida based technical director and scenic designer. She is, as always, happy to be working at the Athens Theatre. Previous designs at the Athens include *Erving Berlin's White Christmas*, *Misery*, *Margaritaville*, *Rock of Ages*, *The 25th Annual Putnam County Spelling Bee*, *Ragtime*, *Shrek TYA Version*, *Elf*, *Chicago*, *Mamma Mia!*, *The Fantasticks!*, *9 to 5*, *Into the Woods*, *The Producers*, *Jekyll & Hyde*, *The Wedding Singer*, *Oklahoma!*, *Arsenic & Old Lace*, *Aladdin, Jr.*, *Sister Act*, *Driving Miss Daisy*, *James and the Giant Peach*, *A Christmas Carol*, *The Addams Family*, *Cabaret*, and *White Christmas*. Tori is the owner of Misfit Toys Theatrical LLC, an Orlando based production company that, in addition to building scenery for Athens Theatre productions, provides various scenic and properties services for a number of theatrical organizations from Central Florida to New England. Tori holds an MFA in theatre from the University of Central Florida.



Bonnie Sprung (Scenic Charge Artist) just had fun as Scenic Charge for *Forum* and recently designed and painted *Frozen, Jr.* Bonnie has a BA from Hofstra University in Set Design and Graphics, along with her AA from Valencia Community College in Fine Art. She has done set design, scenic painting, make-up and stage management for over 300 shows in Orlando and New York. She worked as Set/Scenic designer for the BCC Summer Fine Arts program and the JCC Center Players.

Stage Manager, Sound and Graphics for Southern Winds Theatre. She has also designed for GenY Productions, Florida Theatrical Association, First Academy Middle and High School, Boone High, Central Florida Community Arts, The Masters Academy, JCC Youth Academy, The Ensemble Company, SparKyl Entertainment and many more. Some of her nominated designs include *Cabaret*, *The Flick*, *Bat Boy the Musical*, *Jane Eyre the Musical*, *Torch Song*, *Clybourne Park*, *Perfect Arrangement*, *Three Days of Rain*, *Hysteria* and *Who's Afraid of Virginia Wolf*. Bonnie has over 30 yrs. experience in curating, judging various art exhibits and thespian competitions. She is a member of the Women's Caucus For Art and is a past president of the FL chapter. Currently she is on the Seminole Cultural Arts Council Board. Bonnie has shown her fine artwork and has received several awards. www.BonnieSprung.com





THE STATIONS OF

WSBB AM1230 • AM1490

106.9 FM

Clearly THE GREAT VOICE OF VOLUSTA COUNTY

PLAYING THE BEST MUSIC EVER CREATED.
ARTISTS INCLUDING FRANK SINATRA, MICHAEL BUBLE, ELLA FITZGERALD,
HARRY CONNICK, JR., ROD STEWART, TONY BENNETT, AND MANY MORE.

ADESSO
DRYWALL SERVICES
& Son



ADESSOANDSONDRYWALL@HOTMAIL.COM • OFFICE: 386.878.5854

Meet The Production Team



Diane McLean (Production Supervisor, Stage Manager) is a professional stage manager with over 30 years experience in regional, touring, and Off Broadway theater, as well as film and higher education. She received her MFA in Stage Management from Boston University. She has stage managed for The Kennedy Center, Manhattan Theatre Club, Berkshire Theatre Festival, Huntington Theatre Company, Lyric Stage Company, Boston University College of Fine Arts, and Boston

University Tanglewood Institute, to name a few. Film credits include *War of the Worlds*, directed by Steven Spielberg and Stephanie Daley starring Tilda Swinton. In addition to her work at the Athens Theatre, she is a professor and mentor to students at the Mike Curb College of Music, Entertainment, & Art at Daytona State. She is also the former Professor of Theatre at Endicott College in Beverly, MA. She'd like to thank Frank and the staff and board of the Athens Theatre for the opportunity to engage in theatre once again in her new hometown of DeLand. Love to H, C, and G.



Amy Uppercue (Costume Shop Manager, Production Associate) has been working behind the scenes at the Athens Theatre since 2011 and has loved being a part of all the magic that has been created on our stage. Favorite costume design credits include *Footloose: Youth Edition*, *The 25th Annual Putnam County Spelling Bee*, *A Year with Frog and Toad*, *Legally Blonde: the Musical*, and *Footloose*. In addition to running the Athens Costume Shop, Amy is also a teaching artist for the Athens

Theatre Youth Academy, and serves on the board of the National League of Junior Cotillion West Volusia Chapter and the DeLand Choir Parents Association. So much love to C, HK, AB and B.





ABSOLUTE
QUEEN
5 & 8
PM



OCTOBER 26TH • 5 & 8 PM

3 Smart Cookies
CUSTOM COOKIE
ARTISTS
WE CREATE "WOW, LOOK AT THESE!" ROYAL ICING CUSTOM COOKIES



386-479-1069 • www.3smartcookies.com

A Proud Sponsor of Athens Theatre's Box Suite Packages and Promotionals!

The Athens Theatre is always seeking

Volunteers

**Ushers • Tech Crew • Misc.
Ages 16+**

Email: Marketing@AthensDeLand.com



Meet The Production Team



Madison Clark (Assistant Stage Manager) is so thrilled to be a part of her first production at the Athens Theatre. Past stage management credits include *The Secret Garden*, *Romeo and Juliet*, *Xanadu*, and soon *Ken Ludwig's Baskerville* at Daytona State College. She sends special thanks to her friends and family for everything they have done for her, but most importantly to her mom, who is her biggest supporter and the bravest person she knows.



Megan Quiroga (Assistant Stage Manager) is super excited to be a part of *Dracula!* This is her fifth show here at the Athens Theatre. Her stage management credits include *The Little Mermaid*, *A Christmas Carol*, and *Steel Magnolias* at Rising Phoenix Productions. She also was the Assistant Stage Manager for *By the Skin of Our Teeth* and *Rebel without a Cause* at Penguin Point Productions, and *A Funny Thing Happened on the Way to the Forum* here at the Athens Theatre! Megan has graduated Seminole State College with her A.A. and is excited to continue her technical theatre work in Central Florida. Megan is so honored to be one of the ASM's of *Dracula* and hopes you all enjoy the show!

Mara Law, P.A.

Protecting you,
your family,
and your
assets

Advocate For You And Your Loved Ones

We will help you cope with legal matters that concern you the most.

*We practice
in two main areas:*

Family Law - divorce, paternity,
dependency, and adoptions.
We handle both contested and
uncontested cases as well as
post-divorce and post-paternity cases.

Elder Law - estate planning,
guardianship, probate,
Medicaid Long Term Case planning



Wendy A. Mara, JD, MBA, CAP, Mara Law, P.A.
555 West Granada Blvd., Suite D-10 • Ormond Beach, FL 32174
119 Magnolia Avenue • Daytona Beach, FL 32114
228-C East New York Ave. • DeLand, FL 32724
Tel: 386-672-8081 • Fax: 386-265-5995 • www.maralawpa.com



**IMPROV
YOURSELF!**

DELAND AREA 
CHAMBER
of Commerce
& ORANGE CITY ALLIANCE

**JOIN THE CHAMBER FOR NETWORKING
OPPORTUNITIES TO IMPROVE YOUR CONNECTIONS
WITHIN OUR WEST VOLUSIA COMMUNITY**

FOR MORE INFORMATION,
PLEASE EMAIL US AT
CONNECT@DELANDCHAMBER.ORG
OR CALL 386.734.4331 X1

Meet The Administrative Team



Alexa Baldwin (Executive Director) is a graduate of Kent State University with her BFA in Musical Theatre. After twelve years of working in the theatre industry and managing the offices of several companies, Alexa became the Director of Marketing and Operations for the Sands Theatre Center (DBA - Athens Theatre) in July of 2011. In 2021, she was made the theatre's Executive Director. She has dedicated her life to working with an incredible family of co-workers and volunteers to make the Athens Theatre a representation of what community theatres can strive to be—both onstage and off. In addition to her theatre family, she is fortunate to have an incredible husband and daughter who are endlessly patient and supportive with all thing Athens Theatre. Mrs. Baldwin thanks everyone in the cast, crew, production team, and ALL the staff for the fireless hours they spent making tonight's magic happen. She hopes that you enjoy the show and come back to visit us again soon.

Frank Ramirez (Producing Artistic Director) See Creative Team Bios.



Santi Gabino (Director of Marketing and Communications), a native of South Florida, relocated with his husband and two crazy dogs to DeLand in the summer of 2022. With a rich background in venue and event management, Santi served as the Executive & Marketing Director of a highly successful venue in Homestead, FL, for over 11 years. During his tenure on his family's estate, he orchestrated nearly 100 weddings, attracting attention from renowned publications like *Allure Bridal* and *Modern Bride* for magazine shoots. The venue also

became a prime location for television filming, hosting esteemed networks such as Nickelodeon and Telemundo. He also spearheaded the creation of a wildly popular Farm-to-Table dinner series. Having cultivated a substantial social media following in his previous role and drawing upon his expertise, he now oversees the creation of all marketing materials, develops content for social media, writes press releases, radio scripts, and billboard copy, manages public communications, nurtures business-to-business relationships, and more. Additionally, he contributes a monthly food and lifestyle column to *The West Volusia Beacon*, titled "Central Flavors." Outside of work, Santi finds joy in cooking, painting, and succumbing to the irresistible temptation of buying things he absolutely doesn't need at any yard, garage, or estate sale that crosses his path.



Globally Inspired cuisine featuring fresh local seafood, prime steaks, and more!
Follow us on Facebook & Instagram



for specials and event



cress

RESTAURANT

Seating reservations and walk-ins
Open for Lunch: Tues-Sat 11am to 3pm
Open for Dinner: Tues-Sat 5pm to 9pm

103 W. Indiana Ave, DeLand, FL 32720 ♦ 386-734-3740 ♦ cressrestaurant.com



Ask for our Athens Theatre Pre-show 3-course Prix Fixe Menu
(please allow 1.25hrs+ for dining)



Fleishel
FINANCIAL ASSOCIATES
Clarity and Confidence for Life®

Celebrating
100 YEARS
BUILDING ANNIVERSARY



Providing
Clarity and Confidence for Life®
is what we do.
Helping people live life
by design is who we are.

Investment Management and Financial Life Planning

812 N. Woodland Blvd
DeLand, FL 32720
(386)738-1800



12443 San Jose Blvd, Suite 601
Jacksonville, FL 32223
(904) 262-9808

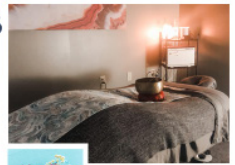
FleishelFinancial.com

Securities offered through Raymond James Financial Services, Inc. Member FINRA/SIPC. Fleishel Financial Associates is not a registered broker/dealer and is independent of Raymond James Financial Services, Inc. Investment advisory services offered through Fleishel Financial Associates and Raymond James Financial Services Advisors, Inc.



SPA • YOGA • WELLNESS

BODHI + SOL



156 S. Woodland Blvd. • DeLand, FL 32720
386-507-2310 • deland@bodhiandsol.com



Meet The Administrative Team



Grace Boynton (Development Director) Grace has a background in both the performing arts and nonprofit development. After graduating from the University of Central Florida in 2020, Grace discovered her passion for nonprofit work and has since made significant contributions to organizations like Planned Parenthood and United Against Poverty, managing yearly budgets of over two million dollars and producing annual fundraising efforts. As the Development Director for the Historic Athens Theatre, she gets to blend her artistic insights with strategic fundraising expertise to support the theater's mission and ensure its continued success in the community. You may recognize Grace as a performer at the Athens Theatre in shows like *RENT*, *9 to 5* and *The Wedding Singer*.



Amanda Tyler (House Manager) A native Floridian, Ms. Tyler studied film and theatre production at Valencia College. She began working in theatre in 1993 at Seaside Music Theater in Daytona Beach as Wardrobe supervisor, Assistant to the Resident Costume Designer, and Costume Rentals Manager. She finds herself out from behind the curtain for the first time as the Athens House Manager. Amanda joined the Athens family in 2023 and is excited to help this incredible organization continue to grow and move forward. She takes great pride in the work

she does alongside the many dedicated Athens Theatre volunteer ushers while helping to bring amazing art to this historic DeLand stage. She hopes that you enjoy the show!



Craig Uppercue (Director of Community Relations) A Stetson University (BM/BME) & Grand Canyon University (M.Ed) alumnus, Mr. Uppercue has taught for 20 years in the public school systems of Florida, currently serving as a Fine Arts specialist in Volusia County Schools. Mr. Uppercue has been with the Athens Theatre since 2011 and had the wonderful privilege of serving as Artistic Director for 10 years. He is now honored to be playing a continued part in the life of the theatre. Craig is the Music Director of the Off-Broadway

National Tour *The Rock & The Rabbi* and performs with the show when available. Other performing opportunities include Broadway and Off-Broadway credits such as *The Witnesses Musical* (Original Cast member), *The Lion King*, *Songs for a New World*, and numerous national tours throughout the U.S. He is actively involved with many professional symphonies and maintains an active performing schedule with professional artists throughout the nation. Craig and his wonderful wife, Amy, live locally, enjoying every moment as they watch their three daughters grow up!



ORIGINAL SINGER/SONGWRITER SERIES



What's Playing Around You?

THE CENTRAL FLORIDA THEATRE ALLIANCE

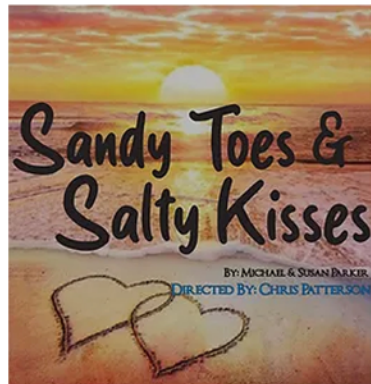
Daytona Playhouse

Daytona Beach
DaytonaPlayhouse.org
November 1 - 10



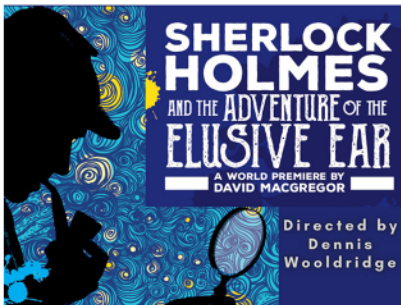
Shoestring Theatre

Lake Helen
ShoestringTheatre.net
November 15 - 24



Gateway Center for the Arts

DeBary
gatewaycenterforthearts.org
November 1 - 10



The Little Theatre

New Smyrna Beach
NSBPlayers.org
October 24 - November 3



Meet The Administrative Team



Roberta (Bobe) Kenemer (Resident Graphic Artist) is a graduate of Ringling College of Art & Design (formerly Ringling School of Art) majoring in Graphic Arts & Illustration. After relocating to Volusia County in 1982, Bobe worked for a small publishing company and as a Cartographer before accepting a position at Tennant Printing Company in DeLand. She gained extensive experience in the Graphics Department of various printing companies, along with numerous freelance projects, before assuming her role with the Athens Theatre in the fall of 2019. As the sole

image designer for the theatre and the Athens Theatre Youth Academy, her graphic design skills play an integral role in the theatre's visual identity. She takes immense pride in being part of the Athens Theatre family and eagerly anticipates the opportunity to contribute to the creative journey of each upcoming production and event.



Mike Kitaif (Photographer) Mike has been passionate about photography since high school and is proud to be photographing for the Athens Theatre. Along with photographing other local theaters, he spent eight seasons capturing images for the UCF Marching Knights. When not in the theater, Mike develops software for Cardinal Systems that collects 3D data from photographic and laser sources which is utilized by mapping professionals, civil engineers, and NASA. With a wife and daughter on stage, Mike's love for theater photography blossomed naturally, becoming

a 12-years passion. He's honored to have the best seat in the house during photo sessions and is deeply grateful to the actors, crew, directors and everyone who contributes to make the magic of theater happen.



Shonda L. Thurman (Diversity, Equity, and Inclusion Advocate) Born and raised in Flint, MI, Ms. Thurman holds a BFA in Musical Theatre from Roosevelt University, in Chicago, IL, and Stephens College in Columbia, MO. She also holds a theatre management certification from Tiffany Vega Management. Shonda is currently the curriculum manager for the Orlando Family Stage and current co-chair for the Juneteenth lunch and Learn Facts of Freedom. Her performance credits range from local to all over the country in national tours. In her roles as a DEIA,

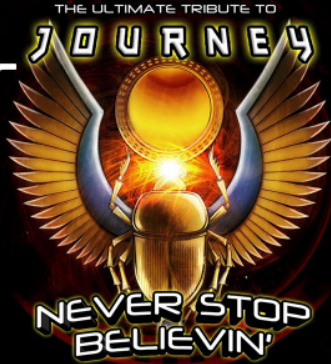
performer, director, and educator she believes that everyone deserves a voice, their stories told and heard, and themselves represented in whatever arena they choose. "I am not a teacher I am an awakener." ~Robert Frost.

BACK TO BROADWAY
Barbra Streisand
Tribute
November 8 • 7:30pm

ATHENS THEATRE
CONCERT SERIES

A promotional poster for a concert. It features a woman in a blue sailor-style dress with a red bow at the waist, singing into a microphone. The background is dark with some light patterns. The text is in large, bold, yellow and white fonts. The Athens Theatre Concert Series logo is in the bottom left corner.

November
9th
7:30pm



OVER 20 YEARS SERVING OUR COMMUNITY.



Listening... Connecting... Buyers and Sellers



Two Convenient
Downtown Locations!
135 E. Church St.
& 110 W. Indiana
Give us a call at
386.801.4276

Search Listings at www.LiveLoveDeLand.com



215 S Woodland Blvd. DeLand, FL 32720



SPONSORS & DONORS MAKE IT HAPPEN!

GET RECOGNIZED FOR YOUR SUPPORT!

When you make a donation of \$100 or more, your name will be listed in the Athens Theatre Company playbills for the rest of the season!



TAKE A SEAT CAMPAIGN

Honor Your Family • Celebrate a Birthday
Remember A Loved One • Rejoice A Birth
Commemorate A Marriage

These are all great reasons to name a seat at the historic Athens Theatre. As a seat donor, your name or that of a loved one will be engraved on a permanent brass plaque on the back of a luxurious, custom-designed seat. You will also be added to the Donor Plaque located in the lobby. Premium Seats are still available for:

\$1,000, \$750 or \$500

Last year, the Athens Theatre sold over 22,400 tickets to...

**Independent and Cultural Films
Play & Musicals
Live Performances**

This is possible with...



GREAT TALENT & GREAT PEOPLE! OUR AUDIENCES! SPONSORS & DONORS!

Sponsors make it happen... help us make the Athens Theatre DeLand's premier performing arts center by purchasing your Star and "light" our way to the future... Your engraved star will be placed either in a prominent place in our lobby or along the stairways leading to the balcony. Become a member of our star-studded cast today.

\$2,500-Silver Level • \$5,000-Gold Level

ORDER YOUR STAR, SEAT OR MAKE A DONATION
by calling (386) 736-1500 or
email DonorSupport@AthensDeLand.com

ATHENS THEATRE DONORS

GOVERNMENT SUPPORT

Cultural Council of Volusia County

\$15,000-\$24,999

Clifford & Llavonne Strachman

\$10,000-\$14,999

Dr. & Mrs. Bruce Bigman
Kristen Bright
Deborah Littler
Lusignan Foundation

\$5000-\$9,999

Bill & Pam Brown
Clifford & Llavonne Strachman

\$2,000-\$4,999

Latitude at
Daytona Beach Foundation
Stephen & Claudia Roth

\$1,000-\$1,999

Joe Aiello
William & Martha Holler
Wendy Mara
Barry Midway
Mike & Kim Weathers

\$500-\$999

Samuel Atkinson
Timothy Boynton & Alvin Providence
Tricia Daniels
Albert Eid
Frances R. Foundation
Drs. Norman & Valerie Hoffman
Richard M. Kelton
Dr Jeffrey A. Norton M.D.
Robert & Mary Dell Paterno
The Schmude Family
Mac & Kathy Steen

\$250-\$499

Rosenberg Burton
Sharon Chausse
Virginia & Joseph Cornella
Tracey Daniels
Tricia Daniels
Dr. Albert Eid
Merrier Fogle
Greg & Tiffany Freed
Kevin & Carmen Gallagher
Lionel Hector
Dawn & Rudi Hoffman
Shirley Horn
Maxine House

Jack & Jane Manwaring Foundation
Michael Myers & Melinda Lufkin
Rebecca Lynch
Michael Myers
Mary & Laura Paterno
Stephen & Debra Ryan
The Sarnes Family
Schmude Family
Timothy Taylor
Lisa Vorakoun
Scott and Karen Weiss
Donald & Leslie Whalen
112 West LLC

SCAN QR CODE
FOR LINK OR VISIT
ATHENSDELAND.COM
TO DONATE!



\$100-\$249

Paul Abbott
Becky & Anthony Adesso
All the Line Studio &
Incubator, LLC
Ambrico Family Foundation
Suzanne Atkinson
Elaine & Bruce Barritt
Linda Bindler
Elizabeth Blair
Dot Brown
Sandra Colon
Chad & David Conley
Kay Cordero
Amanda Cortright
Randy Deveaux
Jeff Dickinson
Ruby & Bob Dillon
Ann Dobranic
Thomas Douilly
EFG Orchid

James East
The Falasco Family
William Feyk
Celeste Fletcher-Brozorich
Merrie Helyn Fogle
Mark Friend
James Galzerano
Becky Garbacik
Dr. & Mrs. Rhonda Gilliard
Michelle Giraldo
Philip Goldthwait
Ella Hall
Debra Height
Agnes Hindulak
J&J Security
Rev. Kent & Peg Klophaus
Tyler Kosmas State Farm
Dennis Laube
David Le Blanc
Thomas Lewis

Paula & Gary Lindsay
Robert Martin
Dr. Richard Martorano
Sarah McAskill
Jeff McMullan
The Miles Family
Donna Miller
Stephen & Joanne Mosher
Rob & Nancy Naulty
Paula Olivero
Beth Pattison
Heidi Payne
Diane Reed
Stephen & Janet Rhode
Claudia Ricci
Gary & Josephine
Rinkerman
Burton Jerome Rosenberg
Scott Roser
Donna Ross

Marty & Ali Ross
Stephen & Debra Ryan
Madeline Schilling
Dennis Sobock
Lary Sorensen
Taylor & Carla Spalding
Charlie Spells
Ramona Starses
Larry Stein
Laureate Alpha Upsilon
Allison Van Zandt
The Wagoner Family
Scott & Karen Weiss
Judy Whitelock
David Whitmore
Pamela Whittet
Susan Williams
David & Sally Zanden
Allisan Van Zandt
Bridget Voll

All listed have made a donation to the Athens Theatre within the last 12 months.

Thank you for supporting the Athens Theatre

**We thank our
Share the Spotlight Sponsors!**

MBI

DIRECT MAIL + DIGITAL

THE DAYTONA BEACH
NEWS-JOURNAL | LOCALiQ

Quality
Quickprint

print • signs • solutions

the **PARTY**
EXCHANGE

YOUR ONE STOP PARTY SHOP!

Boulevard
Tire Center

Focused on Tomorrows Solutions Today

MAIN STREET
COMMUNITY BANK
OF FLORIDA

The West Volusia
Beacon
EXTRA!

3 Smart
Cookies
CUSTOM COOKIE
ARTISTS

ADESSO
DENTAL SERVICES
& SPA

70
YEARS

Alliance
Community

the
Elusive
Grape

Fleishel
FINANCIAL ASSOCIATES

JOE HEARN
events

Mara
Law, P.A.

Protecting you, your family, and your assets

mattamyHOMES

Pat and Toni's
Sweet Things

State Farm
Amanda Agnew Ins Agency Inc
Amanda Agnew, Agent

THE STATIONS OF
WSBB AM1230-AM1490
106.9 FM
Clearly THE GREAT VOICES OF VOLUSIA COUNTY

Artisan Downtown
Bodhi + Sol Spa
Cress Restaurant
Dale D. Batten, DMD, PA
Kemp Realty Group

Latitude at Daytona Beach Foundation
Phintec
The Anointed Olive
The Family Book Shop
Turn-Key Designs